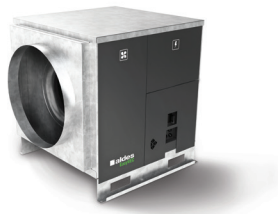


# 11034065

The best-designed range of exhaust box fans on the market, making ventilation efficient, serene, and easy.



## PRODUCT BENEFITS

- wide range from 4000 to 12,000 m<sup>3</sup>/h,
- 100% recyclable.

## REGULATIONS AND COMPLIANCES

Technical Opinion no.: 14.5/16-2185\_V2

### Principles of operation

EasyVEC® Standard delivers unidirectional ventilation in commercial buildings, via air supply or exhaust.

### Product description

EasyVEC® Standard delivers unidirectional ventilation in commercial buildings by air supply or exhaust, to ensure adequate air quality and preservation of the building structure.

### Fields of application

Multi-occupancy residential housing, Refurbishment, Non-residential buildings, Mechanical extract ventilation systems

### Installation

- installation:
  - on anti-vibration slab as per DTU 68.3 recommendations,,
  - indoor or outdoor location,
  - sufficient space must be left in front of the box fan to avoid obstructing the access panel and allow maintenance of internal components.
  - for roof installation, preferably positioned out of the wind to limit pressure losses at the outlet.
- for better acoustic and aeraulic performance, we recommend that you:
  - install sound attenuators at the unit connections,
  - use the ALDES VIRTUO-FIX range of sealed accessories,
  - use MS PRO sealed flexible sleeves to muffle ductwork vibrations.

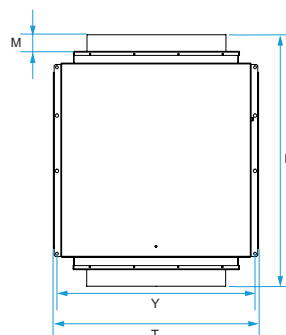
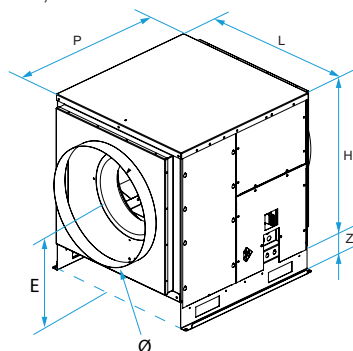
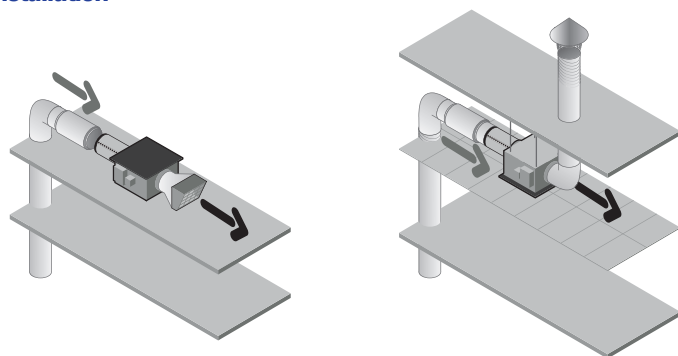
### Main characteristics

- AC motor,
- backward curve impeller,
- galvanised panels Z275.
- multiple options and accessories:
  - filter box,
  - ISO coarse filter 60% ePM10 50%, ePM1 50-75%, ePM1 85%,
  - filter replacement indicator,
  - pressure switch.
- made in France.

11034065

**Supplementary characteristics**

- compatible with technical Approval for Modulated Ventilation Presence-Agito-CO2-Humidity-controlled no. 14.5/16-2185\_V1,
- ErP 2018,
- Eligible for ESC: BAT-TH-112, BAT-TH-125, BAT-EQ-123.

**Installation**

EasyVEC-Compact