

11052203

The BEM 70 small terminal is used for return air in small commercial buildings and offers low pressure loss.



BEM 780 unit

PRODUCT BENEFITS

- low pressure losses,
- simple to install.

Principles of operation

The BEM 70 small spun aluminium terminal is used for return air in small commercial buildings and offers low pressure losses.

Product description

The BEM 70 small terminal is used for return air in small commercial buildings and offers low pressure loss. Easy wall or ceiling installation, available from Ø 125 to Ø 200 mm.

Fields of application

New, Refurbishment, Non-residential buildings

Installation

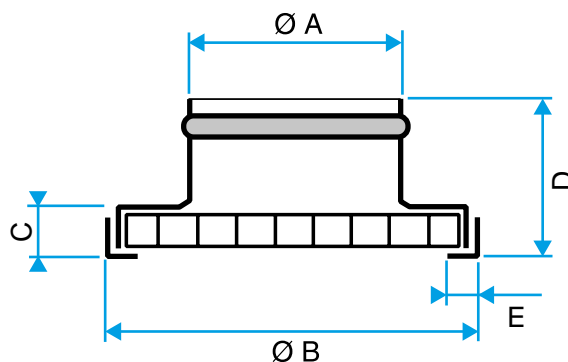
- wall or ceiling installation,
- attached to wall by slotting into duct,
- attached to ceiling using mounting brackets available as accessories.

Reference arguments

- Spun aluminium frame.
- BIM 400: core made of extruded aluminium bars, 15° incline.
- BEM 780: core comprises 12.5 x 12.5 mm mesh.
- Aluminium with RAL 9010 white epoxy paint finish or anodised aluminium, natural satin-finish.
- Installation on wall by slotting into duct (screwed if necessary) and on ceiling using attachment brackets supplied as accessories.

Main characteristics

- spun aluminium frame,
- core comprising 12.5 x 12.5 mm mesh,
- aluminium with epoxy paint finish, RAL 9010 or 9003 White, 30%,
- attachment:
 - wall-mounted by slotting into duct (screw attachment if necessary),
 - ceiling-mounted with mounting brackets supplied as accessories.



Bouche BEM 780

11052203