

**Outdoor grille****11052015**  
**AG 638 600x600 F1**

The AG 638 outdoor wall grille is used for fresh air intake or contaminated air outlet, with no risk of rain ingress due to the form of its vanes.



AG 638 600x600 F1

**PRODUCT BENEFITS**

- installed directly without adapter,
- can be installed in a dedicated adapter without drilling into masonry.

**Principles of operation**

The AG 638 aluminium rectangular grille enables indoor air to exit the building and outdoor air to enter to renew the indoor air. The form of its vanes prevents rain from entering.

**Product description**

The AG 638 is a rectangular outdoor wall grille with horizontal vanes at a 45° incline. It offers a rain protection function and bird screen with a 12 x 12 Ø 1.2 mm square mesh.

**Fields of application**

Multi-occupancy residential housing, New, Refurbishment, Non-residential buildings

**Installation**

- for installation on outside wall.
- direct attachment in masonry or on dedicated adapter,
- the adapter and grille are supplied pre-drilled on the front.

**Reference arguments**

- Extruded aluminium frame with extruded aluminium horizontal rain-guard vanes.
- 40 mm pitch between fins.
- Interior section with protective square 12 x 12 mesh screen, Ø 1.2 mm galvanised steel.
- Anodised aluminium, natural satin finish.
- Installed directly into masonry or with specific mounting frame. The mounting frame and terminal are supplied pre-drilled on front side.

**Main characteristics**

- horizontal vanes at a 45° incline, pitch 40 mm,
- inner part containing galvanised steel 12 x 12 Ø 1.2 mm square mesh as a bird screen,
- anodised aluminium finish, natural satin hue.

**General data**

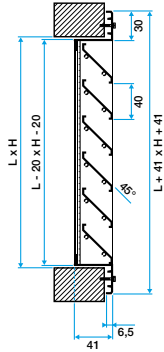
References	Type of finish	Colour
11052015	Aluminium	Aluminium with mosquito mesh

Outdoor grille

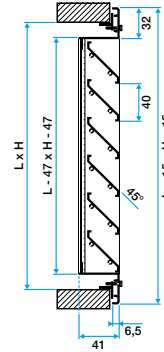
11052015  
AG 638 600x600 F1

Dimensional data

References	H (mm)	L (mm)
11052015	600	600

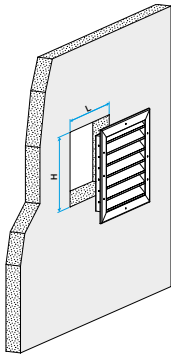


Grille AG 638

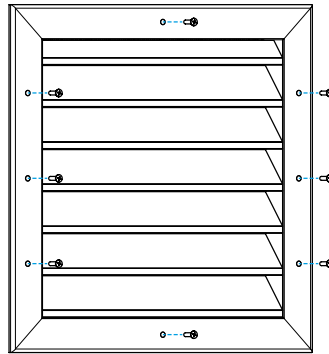


Grille AG 638 avec contre cadre F10

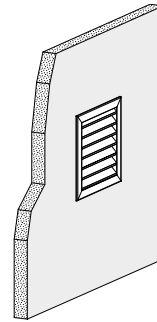
Installation visual 1



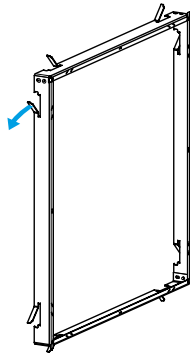
Mise en œuvre avec fixation F1



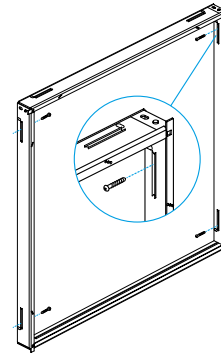
Positions des fixations pour montage F1



Mise en œuvre avec fixation F2



Mise en œuvre avec contre cadre - 1



Mise en œuvre avec contre cadre - 2