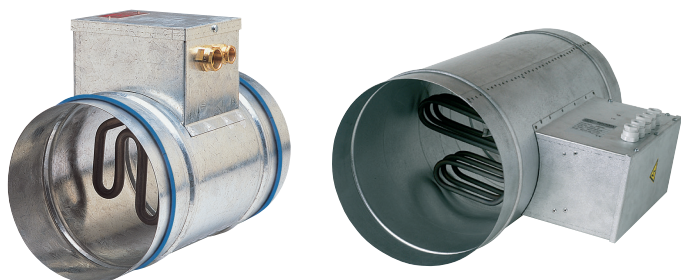


CO2 sensor

11090753

BCA Ø 160 - 1 kW - 2C



PRODUCT BENEFITS

- Pre-heats incoming air,
- Simple to install,
- Homogeneous heating along the whole section.

Product description

This coil is used to heat air in commercial or industrial applications. It is installed as a duct fan (VC) accessory or as a terminal coil on air diffuser terminal plenums.

Fields of application

New, Refurbishment, Non-residential buildings

Installation

- circular connection to standard ducts.

Reference arguments

- Sealed galvanised steel ring.
- AISI 321 stainless steel circuit.
- Single-phase 230V or 3-phase 400V power supply.
- Available with 1, 2 or 3 shielded circuits (1C, 2C or 3C).
- IP 40 box.
- Automatic and manual temperature limiter (60°C / 120°C up to Ø 250, 79°C / 113°C beyond).

Main characteristics

- galvanised steel ring with seals,
- stainless steel circuit AISI 321L,
- single-phase 230V or 3-phase 400V power supply,
- available with 1, 2, or 3 shielded circuits (1C, 2C or 3C),
- IP40 box,
- automatic and manual temperature limiter (60°C / 120°C up to Ø 250, beyond 79°C / 113°C).