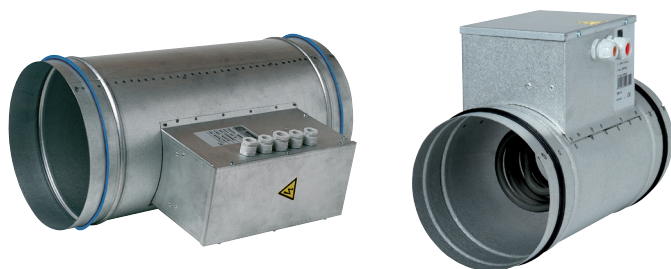


CO2 sensor

11090806

BCA R Mono regulated 1-phase coil Ø 250 - 2.5 kW



PRODUCT BENEFITS

- Precise adjustment of air supply temperature,
- Simple to install,
- Independent.

Product description

This coil is used for controlled heating of supply air on a CMEV system.

Fields of application

New, Refurbishment, Non-residential buildings

Installation

- circular connection to standard ducts with adapter sleeve.

Reference arguments

- Sealed galvanised steel ring. IP40 control box. Settings adjusted by potentiometer in box.
- Automatic and manual temperature limiter (60°C / 120°C up to Ø 250, 79°C / 113°C beyond).
- 4 inputs, pressure switch for airflow control, duct sensor, ambient thermostat and external control.

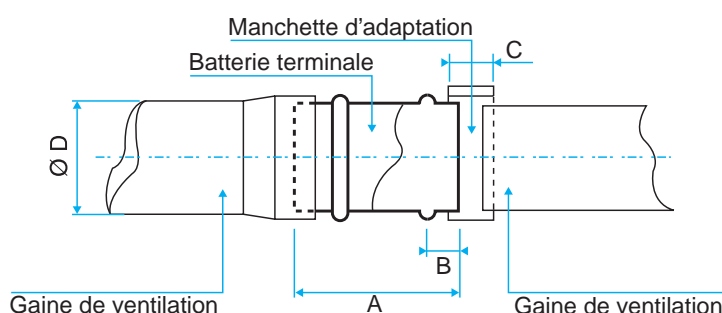
Main characteristics

- galvanised steel ring with seals,
- IP40 control box,
- potentiometer control inside box,
- automatic and manual temperature limiter (60°C / 120°C up to Ø 250, beyond 79°C / 113°C),
- 4 inputs: pressure switch for airflow control, duct sensor, ambient thermostat and external control.

Accessories

Description	Variants
Duct sensor +25/+90°C	11090900
Duct sensor -10/+35°C	11090902
Mechanical ambient thermostat 5°C/30°C	11090903
Programmable weekly thermostat 230V	11090904
Airflow control kit (20-300 Pa)	11090901

Installation



CO2 sensor

11090806

BCA R Mono regulated 1-phase coil Ø 250 - 2.5 kW