

11052246

BEM 780 White RAL9010 - D125

The BEM 70 small terminal is used for return air in small commercial buildings and offers low pressure loss.



BEM 780 D125

PRODUCT BENEFITS

- low pressure losses,
- simple to install.

Principles of operation

The BEM 70 small spun aluminium terminal is used for return air in small commercial buildings and offers low pressure losses.

Product description

The BEM 70 small terminal is used for return air in small commercial buildings and offers low pressure loss. Easy wall or ceiling installation, available from Ø 125 to Ø 200 mm.

Fields of application

New, Refurbishment, Non-residential buildings

Installation

- wall or ceiling installation,
- attached to wall by slotting into duct,
- attached to ceiling using mounting brackets available as accessories.

Reference arguments

- Spun aluminium frame.
- BEM 780: core comprising 12.5 x 12.5 mm mesh.
- Aluminium with RAL 9010 white epoxy paint finish or anodised aluminium, natural satin finish.
- Installation on wall by slotting into duct (screwed if necessary) and on ceiling using attachment brackets supplied as accessories.

Main characteristics

- spun aluminium frame,
- core comprising 12.5 x 12.5 mm mesh,
- aluminium with epoxy paint finish, RAL 9010 or 9003 White, 30%,
- attachment:
 - wall-mounted by slotting into duct (screw attachment if necessary),
 - ceiling-mounted with mounting brackets supplied as accessories.

Accessories

Désignations	References
Mounting brackets for BEM and BIM	11053493

General data

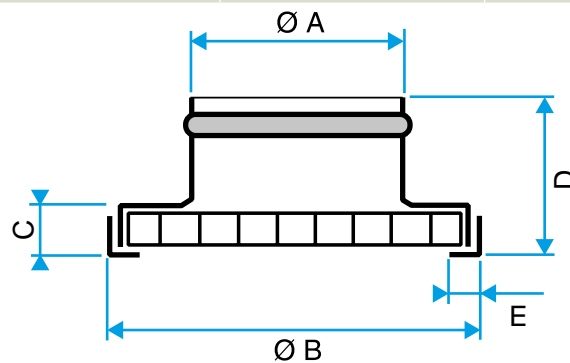
References	Type of finish	Colour
11052246	Epoxy paint	Lagoon blue

11052246

BEM 780 White RAL9010 - D125

Dimensional data

References	C (mm)	D (mm)	Ø A (mm)	Ø B (mm)	Ø N (mm)
11052246	14	54	123	158	125



Bouche BEM 780

Airflow data

References	Comfort airflow for Lw < NR 30
11052246	160