

# 11052248

## BEM 780 White RAL9010 - D200

The BEM 70 small terminal is used for return air in small commercial buildings and offers low pressure loss.



BEM 780 D200

### PRODUCT BENEFITS

- low pressure losses,
- simple to install.

### Principles of operation

The BEM 70 small spun aluminium terminal is used for return air in small commercial buildings and offers low pressure losses.

### Product description

The BEM 70 small terminal is used for return air in small commercial buildings and offers low pressure loss. Easy wall or ceiling installation, available from Ø 125 to Ø 200 mm.

### Fields of application

New, Refurbishment, Non-residential buildings

### Installation

- wall or ceiling installation,
- attached to wall by slotting into duct,
- attached to ceiling using mounting brackets available as accessories.

### Reference arguments

- Spun aluminium frame.
- BEM 780: core comprising 12.5 x 12.5 mm mesh.
- Aluminium with RAL 9010 white epoxy paint finish or anodised aluminium, natural satin finish.
- Installation on wall by slotting into duct (screwed if necessary) and on ceiling using attachment brackets supplied as accessories.

### Main characteristics

- spun aluminium frame,
- core comprising 12.5 x 12.5 mm mesh,
- aluminium with epoxy paint finish, RAL 9010 or 9003 White, 30%,
- attachment:
  - wall-mounted by slotting into duct (screw attachment if necessary),
  - ceiling-mounted with mounting brackets supplied as accessories.

### Accessories

Désignations	References
Mounting brackets for BEM and BIM	11053493

### General data

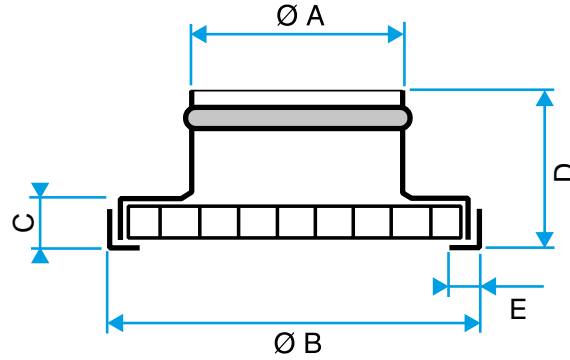
References	Type of finish	Colour
11052248	Epoxy paint	Lagoon blue

# 11052248

## BEM 780 White RAL9010 - D200

### Dimensional data

References	C (mm)	D (mm)	Ø A (mm)	Ø B (mm)	Ø N (mm)
11052248	14	54	198	248	200



Bouche BEM 780

### Airflow data

References	Comfort airflow for Lw < NR 30
11052248	380