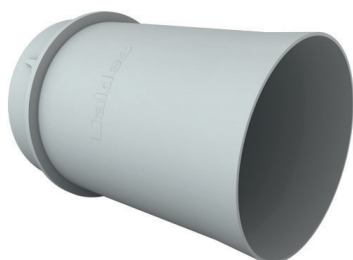


Semi-rigid plastic accessory for oval OPTIFLEX ductwork

11091878

Circular unit connector Ø 75



Product description

Optiflex circular Ø 75 mm accessories are used to connect Optiflex® circular ducts in a ventilation system.

Fields of application

Multi-occupancy residential housing, Individual residential housing, New, Refurbishment

Installation

- accessories easily slotted onto duct,
- use Optiflex® seals ordered separately to ensure an airtight seal.

Reference arguments

Application:

- Perfectly suitable for exhaust or heat recovery systems,
- New builds or refurbishment
- Used to connect a section of circular ducting to the distribution unit

Description:

- Material: Polypropylene
- Height: 91.2 mm
- Width: 91.2 mm
- Depth: 111 mm

Main characteristics

- semi-rigid accessory,
- internal/external diameter:
 - Ø 63/75 mm.
- material: ABS plastic,
- temperature range: -5 to +60°C.