

## Fixed ventilation grille

# 11022158

## ColorLINE® backplate bracket Ø 80 mm- White

ColorLINE® is an aesthetic fixed ventilation grille. With a choice of 15 colours, the ColorLINE® ventilation grille replaces your existing grilles.



Backplate bracket ColorLINE® D 125 mm

### PRODUCT BENEFITS

- Multi-colour range - over 15 colour choices and a transparent panel for personalisation,
- adapts to all sleeves on the market,
- wall or ceiling mounted.

### Principles of operation

The ColorLINE® fixed ventilation grille operates on air supply and exhaust (with Aldes MR control module).

### Product description

The ColorLINE® fixed ventilation grille is designed for individual houses as well as new and refurbished multi-occupancy residential buildings. With a choice of 15 colours and 1 customisable plate, the ventilation grille replaces your existing grilles. It operates on both air supply and exhaust (with the Aldes MR control module).

### Fields of application

Multi-occupancy residential housing, Individual residential housing, New, Refurbishment

### Installation

- the ColorLINE® ventilation grille comprises two removable parts: ABS design cover plate and backplate bracket with dual polypropylene sealed connection,
- adapts to all sleeves on the market (Ø 80 for 70 to 78 mm and Ø 125 for 116 to 125 mm),
- clip-on cover plates can be changed quickly,
- 1 design plate for all grille diameters,
- adjustable air diffusion using the deflector (included) clipped on the backplate bracket,
- wall or ceiling installation,
- compatible with OPTIFLEX, MINIGAINÉ and ALGAINÉ.

### Reference arguments

Bracket for ColorLINE® cover plate D80.

- Colour: Snowflake white. • Adapts to all sleeves on the market Ø80 - from 70 to 78 mm

### Main characteristics

- ColorLINE® fixed ventilation grille,
- air supply and exhaust (with Aldes MR control module),
- available in 2 diameters: Ø 80 mm and Ø 125 mm,
- Ø 80 offers airflow of 15 - 60 m<sup>3</sup>/h,
- Ø 125 offers airflow of 45 - 135 m<sup>3</sup>/h,
- easy to maintain.

### Accessories

Désignations	References
Trident sleeve Ø80	11022074

### General data

References	Colour
11022158	Lagoon blue

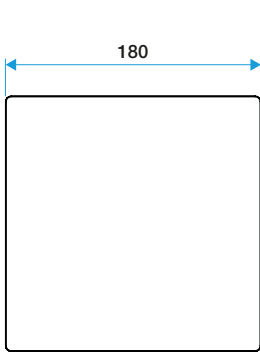
Fixed ventilation grille

## 11022158

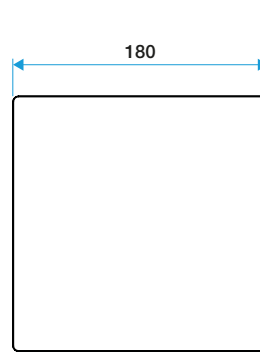
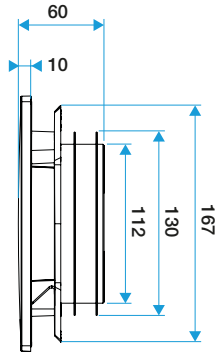
ColorLINE® backplate bracket Ø 80 mm- White

Dimensional data

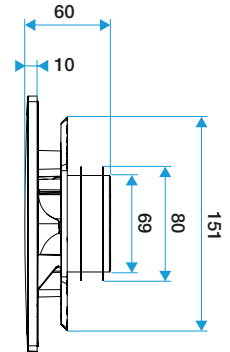
References	H (mm)	w (mm)	P (mm)	Ø connection (mm)
11022158	180	180	60	80



ColorLINE® D 125 mm



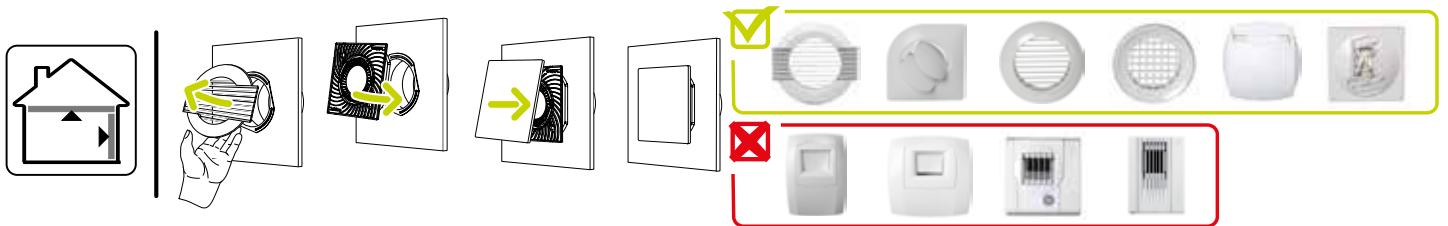
ColorLINE® D 80 mm



Airflow data

References	Airflow (m³/h)
11022158	15/60

Installation visual 1



Installation ColorLINE®