

# 11022156

## ColorLINE® kit Ø 80 mm - Snowflake White

ColorLINE® is an aesthetic fixed ventilation grille. With a choice of 15 colours, the ColorLINE® ventilation grille replaces your existing grilles.



### PRODUCT BENEFITS

- Multi-colour range - over 15 colour choices and a transparent panel for personalisation,
- adapts to all sleeves on the market,
- wall or ceiling mounted.

### Principles of operation

The ColorLINE® fixed ventilation grille operates on air supply and exhaust (with Aldes MR control module).

### Product description

The ColorLINE® fixed ventilation grille is designed for individual houses as well as new and refurbished multi-occupancy residential buildings. With a choice of 15 colours and 1 customisable plate, the ventilation grille replaces your existing grilles. It operates on both air supply and exhaust (with the Aldes MR control module).

### Installation

- the ColorLINE® ventilation grille comprises two removable parts: ABS design cover plate and backplate bracket with dual polypropylene sealed connection,
- adapts to all sleeves on the market (Ø 80 for 70 to 78 mm and Ø 125 for 116 to 125 mm),
- clip-on cover plates can be changed quickly,
- 1 design plate for all grille diameters,
- adjustable air diffusion using the deflector (included) clipped on the backplate bracket,
- wall or ceiling installation,
- compatible with OPTIFLEX, MINIGAINÉ and ALGAINÉ.

### Reference arguments

Application:

- With a choice of 15 colours and a custom plate, the ColorLINE® universal ventilation grille replaces your existing grilles.

Description:

- ColorLINE® fixed ventilation grille,
- ColorLINE® kit D 80 mm: Designer cover plate with bracket D 80 mm,
- Colour: • Snowflake white • Dimensions: 180x180 mm,
- Adapts to all sleeves on the market,
- Wall or ceiling mounted,
- Extract and supply\*,
- App: Aldes ColorLINE® augmented reality: use the app to preview a ColorLINE® grille in your interior design,
- Easy to maintain (\*) With Aldes MR control module.

### Main characteristics

- ColorLINE® fixed ventilation grille,
- air supply and exhaust(with Aldes MR control module),
- available in 2 diameters: Ø 80 mm and Ø 125 mm,
- Ø 80 offers airflow of 15 - 60 m<sup>3</sup>/h,
- Ø 125 offers airflow of 45 - 135 m<sup>3</sup>/h,
- easy to maintain.

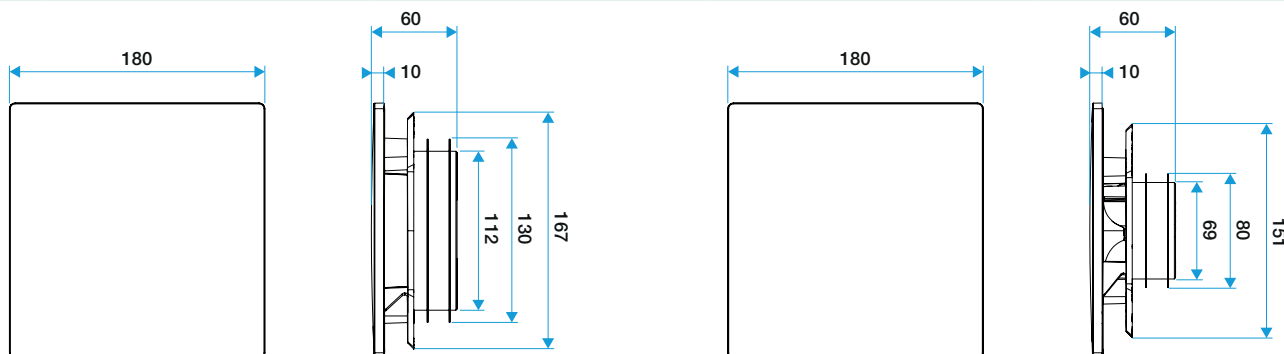
### Accessories

Description	Variants
Shaft for humidity-controlled terminals D80/100 mm -White	11015274

## 11022156 ColorLINE® kit Ø 80 mm - Snowflake White

### Dimensional data

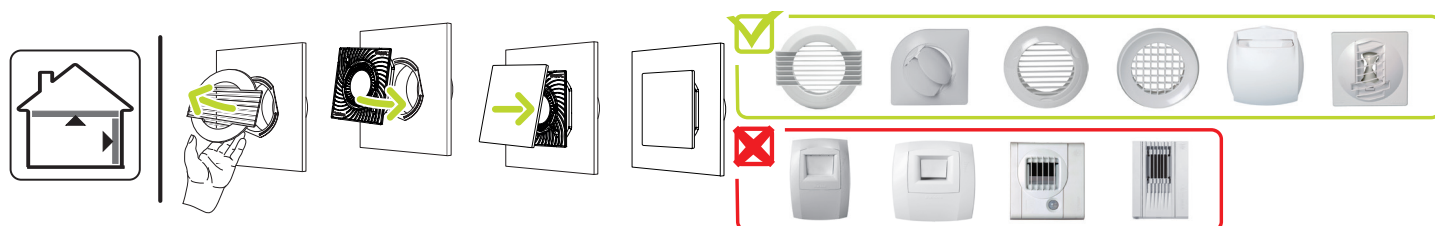
Variants	H (mm)	w (mm)	P (mm)	Ø connection (mm)
11022156	180	180	60	80



### Airflow data

Variants	Airflow (m³/h)
11022156	15/60

### Installation



Installation ColorLINE®