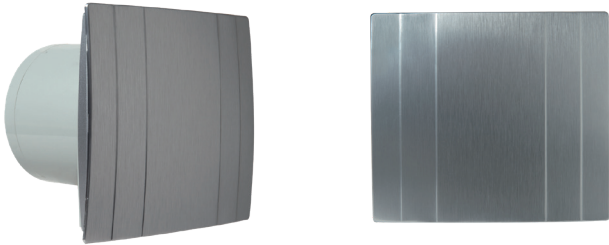


Duct grille**11022321
DECO ALU 125**

DECO is an ultra-discreet extractor fan: very quiet, available in white or aluminium finish. For large or small rooms (2 diameters), with 3 options: switch, timer-controlled stop or humidity detection.

**PRODUCT BENEFITS**

- aesthetic: white finish or aluminium trim,
- very quiet: as low as 26 dB(A),
- very low energy consumption: as low as 5.6 W.

Principles of operation

- DECO intermittent extractors deliver intermittent ventilation of a space: kitchen, bathroom, WC or laundry room (depending on the diameter chosen),
- 3 operating modes:
 - switch-operated start/stop (version I),
 - switch-operated start and adjustable timer-controlled stop (T version)
 - activation by detection of humidity level, adjustable timer-controlled stop (H version),

Product description

DECO is a range of intermittent extractor fans with a decorative white or aluminium front panel, for easy installation in your dwelling. These fans provide intermittent ventilation of a room: WC, bathroom, kitchen, utility room, etc. depending on the diameter chosen. All while adapting to your pace of life and ensuring optimum comfort with their silent operation and low energy consumption.

Fields of application

Multi-occupancy residential housing, Individual residential housing, Refurbishment

Installation

- attachment using 4 screws supplied,
- wall or ceiling attachment,
- maximum length of output duct: 2 m,
- manual and timed stop-start operation using a switch,
- fresh air brought into room via air inlet grille or door undercut.

Reference arguments

display carton. • Application:

- Intermittent room ventilation,
- Forced and intermittent exhaust.

• Description:

- Material: ABS body, ABS aesthetic front panel with aluminium trim
- Low-noise motor,
- Removable backdraft damper at rear,
- Aluminium finish,
- Manual operation,
- Supplied in a display carton.

Duct grille

11022321

DECO ALU 125

Main characteristics

- 2 diameters:
 - Ø 100 mm for rooms up to 7 m²; bathroom, WC, laundry room,
 - Ø 125 mm for rooms from 7 to 12 m²: kitchen, bathroom, WC, laundry room.
- 3 operating modes:
 - Switch-operated start/stop (version I),
 - Switch-operated start and adjustable timer-controlled stop (version T),
 - activation by detection of humidity level, adjustable timer-controlled stop (H version),
- Low-consumption motor with low noise level,
- removable backdraft damper at rear of fan,
- built-in thermal protection,
- material:
 - high quality ABS body,
 - decorative ABS cover with aluminium trim (for aluminium finish).
- supplied in a display carton.

Supplementary characteristics

- manual operation (version I): switch-operated start and stop (switch not supplied),
- timer-controlled operation with adjustable timer (T version):
 - switch-operated start,
 - timer-controlled shutdown, adjustable from 2 to 30 minutes.
- automatic operation with humidity detection (H version):
 - activation of boost mode by humidity level, adjustable between 60% and 90%. Activation is automatic if the ambient humidity level exceeds the preset threshold value,
 - timer-controlled shutdown, adjustable between 2 and 30 minutes. Once the indoor humidity level has returned to below the activation threshold, the extractor operates for the pre-set duration then automatically shuts down.

Contents of kits

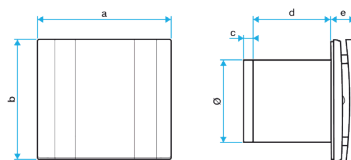
- attachment screw and plug;4

General data

Variants	Surface-mounted thickness (mm)	Operation	Number of speeds	Maximum extract air temperature (°C)	Type of finish	Motor Type
11022321	35	Manual start/stop by switch	1	40	Aluminium	AC

Dimensional data

Variants	A (mm)	B (mm)	C (mm)	D (mm)	E (mm)	H (mm)	L (mm)	P (mm)	Ø discharge (mm)	Weight (kg)
11022321	201	178	13,5	101	35	178	201	149,5	125	0,73



Airflow data

Variants	Max. airflow (m ³ /h)
11022321	115

Acoustic data

Variants	Sound pressure at 3 m (dB(A))
11022321	31

Duct grille

11022321

DECO ALU 125

Electrical datas

Variants	Voltage (V)	Frequency (Hz)	Max. power	Protection current (A)
11022321	230	50	9.3	2

Regulatory data

Variants	Electrical insulation class
11022321	Class 2

Curve

