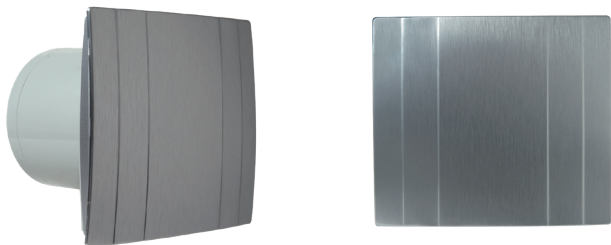


**Duct grille****11022323  
DECO ALU 125 H**

DECO is an ultra-discreet extractor fan: very quiet, available in white or aluminium finish. For large or small rooms (2 diameters), with 3 options: switch, timer-controlled stop or humidity detection.

**PRODUCT BENEFITS**

- aesthetic: white finish or aluminium trim,
- very quiet: as low as 26 dB(A),
- very low energy consumption: as low as 5.6 W.

**Principles of operation**

- DECO intermittent extractors deliver intermittent ventilation of a space: kitchen, bathroom, WC or laundry room (depending on the diameter chosen),
- 3 operating modes:
  - switch-operated start/stop (version I),
  - switch-operated start and adjustable timer-controlled stop (T version)
  - activation by detection of humidity level, adjustable timer-controlled stop (H version),

**Product description**

DECO is a range of intermittent extractor fans with a decorative white or aluminium front panel, for easy installation in your dwelling. These fans provide intermittent ventilation of a room: WC, bathroom, kitchen, utility room, etc. depending on the diameter chosen. All while adapting to your pace of life and ensuring optimum comfort with their silent operation and low energy consumption.

**Fields of application**

Multi-occupancy residential housing, Individual residential housing, Refurbishment

**Installation**

- attachment using 4 screws supplied,
- wall or ceiling attachment,
- maximum length of output duct: 2 m,
- manual and timed stop-start operation using a switch,
- fresh air brought into room via air inlet grille or door undercut.

**Reference arguments**

- Application:
  - Intermittent room ventilation,
  - Forced and intermittent exhaust.
- Description:
  - Material: ABS body, ABS aesthetic front panel with aluminium trim
  - Low-noise motor,
  - Removable backdraft damper at rear,
  - Aluminium finish,
  - Operation: timed stop-start operation according to preset humidity level,, operating time preset from 2 to 30 minutes, humidity level preset from 60 % to 90 %,
  - Supplied in a display carton.

## Duct grille

# 11022323

## DECO ALU 125 H

### Main characteristics

- 2 diameters:
  - Ø 100 mm for rooms up to 7 m<sup>2</sup>; bathroom, WC, laundry room,
  - Ø 125 mm for rooms from 7 to 12 m<sup>2</sup>: kitchen, bathroom, WC, laundry room.
- 3 operating modes:
  - Switch-operated start/stop (version I),
  - Switch-operated start and adjustable timer-controlled stop (version T),
  - activation by detection of humidity level, adjustable timer-controlled stop (H version),
- Low-consumption motor with low noise level,
- removable backdraft damper at rear of fan,
- built-in thermal protection,
- material:
  - high quality ABS body,
  - decorative ABS cover with aluminium trim (for aluminium finish).
- supplied in a display carton.

### Supplementary characteristics

- manual operation (version I): switch-operated start and stop (switch not supplied),
- timer-controlled operation with adjustable timer (T version):
  - switch-operated start,
  - timer-controlled shutdown, adjustable from 2 to 30 minutes.
- automatic operation with humidity detection (H version):
  - activation of boost mode by humidity level, adjustable between 60% and 90%. Activation is automatic if the ambient humidity level exceeds the preset threshold value,
  - timer-controlled shutdown, adjustable between 2 and 30 minutes. Once the indoor humidity level has returned to below the activation threshold, the extractor operates for the pre-set duration then automatically shuts down.

### Contents of kits

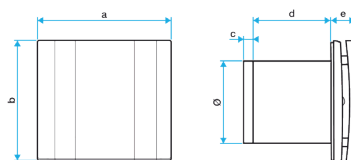
- attachment screw and plug;4

### General data

Variants	Surface-mounted thickness (mm)	Operation	Number of speeds	Maximum extract air temperature (°C)	Type of finish	Motor Type
11022323	35	Automatic start by detection of humidity level, timer-controlled stop	1	40	Aluminium	AC

### Dimensional data

Variants	A (mm)	B (mm)	C (mm)	D (mm)	E (mm)	H (mm)	L (mm)	P (mm)	Ø discharge (mm)	Weight (kg)
11022323	201	178	13,5	101	35	178	201	149,5	125	0,73



### Airflow data

Variants	Max. airflow (m <sup>3</sup> /h)
11022323	115

### Acoustic data

Variants	Sound pressure at 3 m (dB(A))
11022323	31

Duct grille

## 11022323

### DECO ALU 125 H

#### Electrical datas

Variants	Voltage (V)	Frequency (Hz)	Max. power	Protection current (A)
11022323	230	50	9.3	2

#### Regulatory data

Variants	Electrical insulation class
11022323	Class 2

#### Curve

