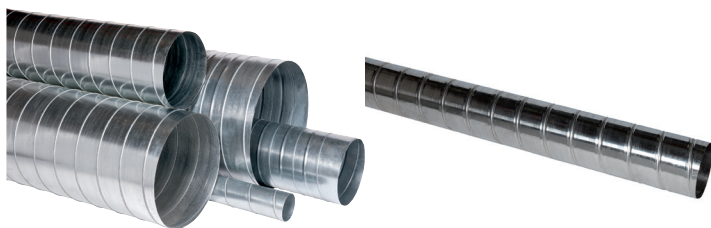


## Semi-rigid plastic duct

11091226

EE GALVA STOREY ELEMENT 2.47 m - Ø 200 mm

Circular galvanised steel ducts are ideal for all types of air distribution systems.



## PRODUCT BENEFITS

- core range available in stock all across France,
- Aldes is the sole French manufacturer of the whole range,
- galvanisation and thickness compliant with quality standards.

## Product description

Circular galvanised steel ducts are ideal for all types of air distribution systems. They are available in lengths of 3 m or 2.47 m.

## Fields of application

Multi-occupancy residential housing, New, Refurbishment, Non-residential buildings

## Installation

- accessories easily slotted on: ducts are female, accessories are male,
- attached using collars or perforated strip, rails, etc. (see installation accessories pages).

## Reference arguments

Application:

- Circular duct 2.47 m long designed for dry risers in multi-occupancy housing
- Ideally coupled with CRE storey collectors and serves to access higher levels quicker

Description:

- Galvanised steel circular duct length 2.47 m diameter 200 mm

## Main characteristics

- standard bar length: 3 m,
- storey elements (2.47 m), designed for use as risers in multi-occupancy residential buildings, are ideal for coupling with CRE storey collectors and enable faster assembly,
- range available from diameter 80 to 900.
- ribbed tubes with smooth end pieces to ensure airtight seal on rigid connections,
- MO fire certification,
- compliance with standards NF EN 1506 and NF EN 12237.

## Accessories

Description	Variants
INSULATED COLLAR D200	11091058
Quick Susp. cable 2 m 0-45 kg	11091064
Quick Susp. cable 3 m 0-45 kg	11091065
Quick Susp. cable 5 m 0-45 kg	11091093
Inspection hatch D200 250 x 150	11091837

## General data

Variants	Free air passage section (m²)
11091226	0,13

## Dimensional data

Variants	L (mm)	Ø (mm)	Weight (kg)
11091226	2470	200	5,553

Semi-rigid plastic duct

# 11091226

EE GALVA STOREY ELEMENT 2.47 m - Ø 200 mm