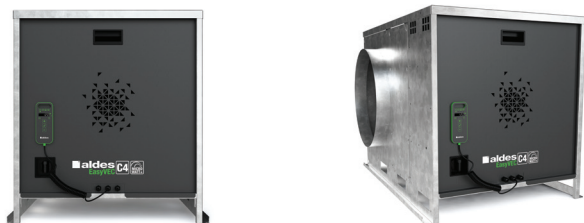


CO2 sensor

11034255

EasyVEC® C4 Micro-watt + 8000 IP Insulated

The best-designed range of exhaust box fans on the market, making ventilation efficient, serene, and easy.



PRODUCT BENEFITS

- wide range from 5,000 to 12,000 m³/h,
- up to -15% savings on building heating costs compared to Standard unit,
- 100% recyclable.

REGULATIONS AND COMPLIANCES

Technical Opinion no.: 14.5/17-2267_V3 ; 14.5/16-2185_V2

Principles of operation

EasyVEC® C4 ventilates multi-occupancy residential buildings to ensure correct air quality in dwellings and preserve the building structure.

Product description

EasyVEC® C4 MICRO-WATT + ventilates multi-occupancy residential buildings to ensure correct air quality in dwellings and preserve the building structure. Combined with the T.Flow® Hygro+ / Nano domestic hot water production solution, the heat calories naturally present in air extracted from the dwelling are exchanged and used as a heat source to heat the water.

The Aldes MICRO-WATT + patented controller automatically creates a custom regulation profile (Auto-Adaptative Technology) to adjust the pressure delivered by the box fan to the actual needs of the system. This means the ventilation adjusts precisely to needs and generates significant savings on heating costs.

AldesConnect® Pro can remotely monitor the fan unit for greater responsiveness in handling breakdowns and malfunctions.

Fields of application

Multi-occupancy residential housing, New, Refurbishment

Installation

- installation:
 - on anti-vibration slab as per DTU 68.3 recommendations,,
 - indoor or outdoor location,
 - sufficient space must be left in front of the box fan to avoid obstructing the access panel and allow maintenance of internal components.
 - for roof installation, preferably positioned out of the wind to limit pressure losses at the outlet.
- For better acoustic and aeraulic performances, we recommend that you:
 - install sound attenuators at the unit connections,
 - use the ALDES VIRTUO-FIX range of sealed accessories,
 - use MS PRO sealed flexible sleeves to muffle ductwork vibrations.

Reference arguments

- Application:
 - C4 very low consumption centralised unidirectional extractor fan for CMEV system,
 - new builds and refurbishment,
 - Micro-Watt+ Aldes Auto-Adaptive Technology™ controller for controlled pressure,
 - attic / equipment rooms / flat roofs,
 - indoor / outdoor.
- Description:
 - EasyVEC® C4 Micro-Watt+ very low consumption exhaust fan unit (C4 certification: 400°C - 1/2 hour),
 - easy to select: Selector PoWair and Conceptor Ventilation design software,
 - easy to configure via intuitive interface,
 - easy to service: link to documentation via QR code, single access panel, compatible with AldesConnect™ Pro supervision service (optional),
 - very low consumption.

CO2 sensor

11034255

EasyVEC® C4 Micro-watt + 8000 IP Insulated

Main characteristics

- Micro-watt+ control and patented Aldes Auto-Adaptive Technology™ software to adapt the pressure delivered by the unit to the actual needs of the system,
- 3 other additional control modes:
 - Micro-watt at constant pressure,
 - via external 0-10V probe (e.g. CO2 sensor),
 - constant airflow.
- EC motor with very low power consumption (50/60 Hz),
- backward curve impeller,
- unit made of galvanised steel Z275,
- simple and intuitive EasyVEC® remote control,
- proximity switch as standard,
- humidity-controlled or pre-configured T.Flow control mode
- compatible with all types of ductwork, even with junctions,
- central system: savings on maintenance,
- alarm relay available by wiring to the PCB,
- multiple options and accessories:
 - fixed pressure switch 80 Pa for GAS CMEV,
 - ducted discharge,
 - 25 mm dual-wall acoustic insulation,
 - compatible with Modbus RS485,
 - AldesConnect® Pro.
- made in France.

Supplementary characteristics

- certification C4 Ø160,
- compatible with «Bahia» humidity-controlled ventilation technical approval no. 14.5/17-2267,
- ESC-eligible: BAR-TH-127.

Accessories

| Description | Variants |
|----------------------------------|----------|
| Circuit breaker 11A - 16A | 11057056 |
| EasyVEC® Plenum plug T7 Ø 630 mm | 11034494 |
| EasyVEC® connector T7 Ø 630 mm | 11034446 |

Associated services

Commissioning

General data

| Variants | Type of motor |
|----------|---------------|
| 11034255 | EC |

Dimensional data

| Variants | E (mm) | F (mm) | H (mm) | L (mm) | LT (mm) | M (mm) | P (mm) | T (mm) | Y (mm) | Z (mm) |
|----------|--------|--------|--------|--------|---------|--------|--------|--------|--------|--------|
| 11034255 | 500 | 975 | 760 | 785 | 882 | 60 | 765 | 835 | 815 | 115 |

Airflow data

| Variants | Airflow (m³/h) |
|----------|----------------|
| 11034255 | 8000 |

CO2 sensor

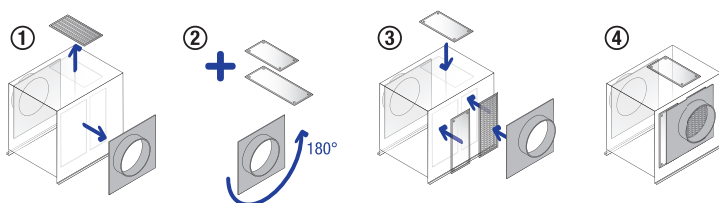
11034255

EasyVEC® C4 Micro-watt + 8000 IP Insulated

Electrical datas

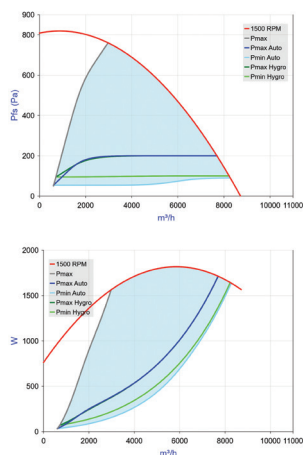
| Variants | Maximum power (W) | Max. power | Max. power | Protection rating | Maximum current (A) | Power supply |
|----------|-------------------|------------|------------|-------------------|---------------------|--------------|
| 11034255 | 1850 | 1,85 | 1850 | IP24 | 12 | Single-phase |

Installation



EasyVEC

Curve



- > Aerulic curves drawn up as per standard NF EN ISO 5801.
- > P (Pa) = static pressure.
- > P (W) = power consumption.

| Ø (mm) | Weight (kg) |
|--------|-------------|
| 630 | 98 |