

## Ventilation box fan

11034955

## EasyVEC® C4 Standard 1000 Pressure drop switch

The best-designed range of exhaust box fans on the market, making ventilation efficient, serene, and easy.



EasyVEC-C4Standard-2500

## PRODUCT BENEFITS

- wide range from 400 to 12,000 m<sup>3</sup>/h
- 100% recyclable.

## REGLEMENTATIONS AND COMPLIANCES

Technical Opinion no.: 14.5/17-2267\_V3 ; 14.5/16-2185\_V2

### Principles of operation

EasyVEC® C4 ventilates multi-occupancy residential buildings to ensure correct air quality in dwellings and preserve the building structure.

### Product description

EasyVEC® C4 Standard ventilates multi-occupancy residential buildings to ensure adequate air quality in dwellings and preserve the building structure.

### Fields of application

Multi-occupancy residential housing, Refurbishment

### Installation

- installation:
  - on anti-vibration slab as per DTU 68.3 recommendations,,
  - indoor or outdoor location,
  - sufficient space must be left in front of the box fan to avoid obstructing the access panel and allow maintenance of internal components.
  - for roof installation, preferably positioned out of the wind to limit pressure losses at the outlet.
- For better acoustic and aeraulic performances, we recommend that you:
  - install sound attenuators at the unit connections,
  - use the ALDES VIRTUO-FIX range of sealed accessories,
  - use MS PRO sealed flexible sleeves to muffle ductwork vibrations.

### Reference arguments

- Application:
  - C4 Standard centralised unidirectional exhaust box fan for CMEV system,
  - refurbishment,
  - attic / equipment room / flat roofs,
  - indoor / outdoor.
- Description:
  - EasyVEC® C4 Standard box fan (C4 certification: 400 °C - 1/2 hour),
  - easy to select: Selector poWair and Conceptor Ventilation design software,
  - easy to service: link to documentation via QR code, single access panel,
  - speed controller as standard to match power needs precisely,
  - fixed 80 Pa pressure drop switch: mandatory safety device for gas CMEV.

Ventilation box fan

## 11034955

### EasyVEC® C4 Standard 1000 Pressure drop switch

**Main characteristics**

- AC motor (50/60 Hz) for 400 and 700 models,
- EC motor (50/60 Hz) for 1000 to 2500 models,
- forward-curve impeller,
- unit made of galvanised steel Z275,
- proximity switch as standard,
- compatible with all types of ductwork, even with junctions,
- central system: savings on maintenance.
- multiple options and accessories:
  - fixed pressure switch 80 Pa for GAS CMEV,
  - ducted discharge.
- made in France.

**Supplementary characteristics**

- certification C4 Ø160,
- compatible with technical approval for "Bahia" humidity-controlled ventilation No. 14.5/17-2267.

**Accessories**

Désignations	References
Circuit breaker 1.6A - 2.5A	11057052
EASYVEC CONNECTOR T3 D315	11034442

**Associated services**

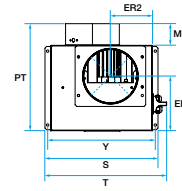
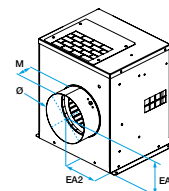
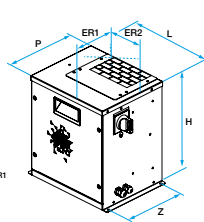
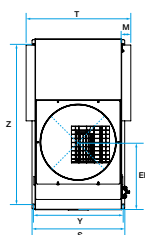
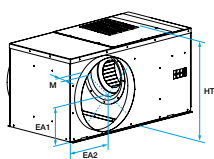
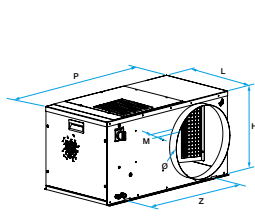
Commissioning

**General data**

References	Type of motor
11034955	EC

**Dimensional data**

References	EA1 (mm)	EA2 (mm)	ER1 (mm)	H (mm)	HP (mm)	L (mm)	M (mm)	P (mm)	PT (mm)	S (mm)
11034955	207	193.5	312	412,5	470.5	374	50	773	480	406.5



EasyVEC-C4 Standard 1000 - 2500

EasyVEC-C4 Standard 400-700

**Airflow data**

References	Airflow (m³/h)
11034955	1000

Ventilation box fan

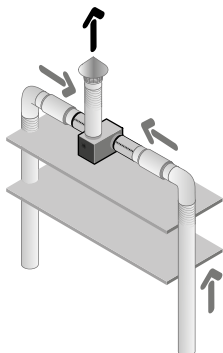
## 11034955

### EasyVEC® C4 Standard 1000 Pressure drop switch

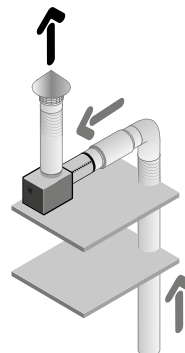
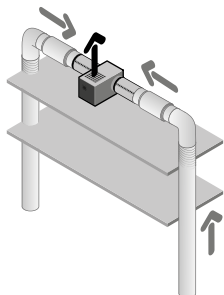
Electrical datas

References	Protection rating	Maximum current (A)	Maximum power (W)	Power supply	Max. power
11034955	IP24	2	230	Single-phase	230

Installation visual 1

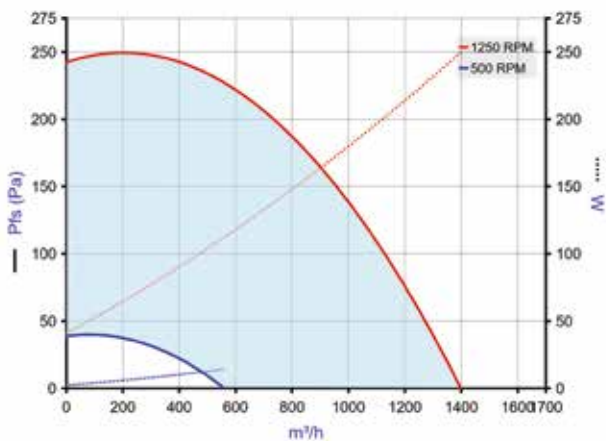


EasyVEC C4 Standard 1000 - 2500



EasyVEC C4 Standard 400-700

Curve



EasyVEC-C4Standard-1000

- > Aerulic curves drawn up as per standard NF EN ISO 5801.
- > P (Pa) = static pressure.
- > P (W) = power consumption.