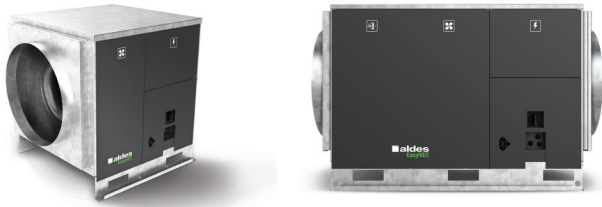


# 11034053

## EasyVEC® Standard 10000 IP VAR STR CIRC DP

The best-designed range of exhaust box fans on the market, making ventilation efficient, serene, and easy.



### PRODUCT BENEFITS

- wide range from 4000 to 12,000 m<sup>3</sup>/h,
- 100% recyclable.

### REGULATIONS AND COMPLIANCES

Technical Opinion no.: 14.5/16-2185\_V2

### Principles of operation

EasyVEC® Standard delivers unidirectional ventilation in commercial buildings, via air supply or exhaust.

### Product description

EasyVEC® Standard delivers unidirectional ventilation in commercial buildings by air supply or exhaust, to ensure adequate air quality and preservation of the building structure.

### Fields of application

Multi-occupancy residential housing, Refurbishment, Non-residential buildings, Mechanical extract ventilation systems

### Installation

- installation:
  - on anti-vibration slab as per DTU 68.3 recommendations,,
  - indoor or outdoor location,
  - sufficient space must be left in front of the box fan to avoid obstructing the access panel and allow maintenance of internal components.
  - for roof installation, preferably positioned out of the wind to limit pressure losses at the outlet.
- for better acoustic and aeraulic performance, we recommend that you:
  - install sound attenuators at the unit connections,
  - use the ALDES VIRTUO-FIX range of sealed accessories,
  - use MS PRO sealed flexible sleeves to muffle ductwork vibrations.

### Reference arguments

- Application:
  - centralised, very low-consumption unidirectional air supply or exhaust box fan for non-residential CMEV system,
  - new builds and refurbishment,
  - air supply /exhaust,
  - attic / equipment rooms / flat roofs,
  - indoor / outdoor.
- Description:
  - EasyVEC® Standard box fan,
  - easy to select: Selector PoWair® and Conceptor Ventilation design software,
  - easy to service: link to documentation via QR code, single access panel.

# 11034053

## EasyVEC® Standard 10000 IP VAR STR CIRC DP

### Main characteristics

- AC motor,
- backward curve impeller,
- galvanised panels Z275.
- multiple options and accessories:
- filter box,
- ISO coarse filter 60% ePM10 50%, ePM1 50-75%, ePM1 85%,
- filter replacement indicator,
- pressure switch.
- made in France.

### Supplementary characteristics

- compatible with technical Approval for Modulated Ventilation Presence-Agito-CO2-Humidity-controlled no. 14.5/16-2185\_V1,
- ErP 2018,
- Eligible for ESC: BAT-TH-112, BAT-TH-125, BAT-EQ-123.

### Accessories

| Description                       | Variants |
|-----------------------------------|----------|
| Circuit breaker 11A - 16A         | 11057056 |
| Duct sensor +25/+90°C             | 11090900 |
| Airflow control kit (20-300 Pa)   | 11090901 |
| Duct sensor -10/+35°C             | 11090902 |
| Female rain hood + screen Ø710 mm | 11056410 |
| OCTA D710 sealed                  | 11094647 |
| MS PRO V2 D710                    | 11094663 |

### Filters

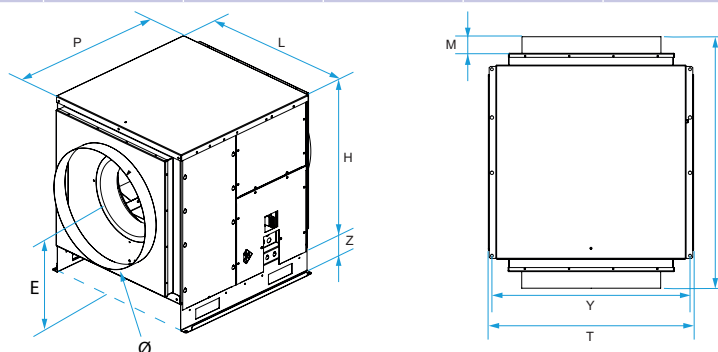
| Description                    | Variants |
|--------------------------------|----------|
| G4 filter EasyVEC® 10000/12000 | 11034411 |
| M5 filter EasyVEC® 10000/12000 | 11034414 |
| F9 filter EasyVEC® 10000/12000 | 11034428 |
| F7 filter EasyVEC® 10000/12000 | 11034425 |

### General data

| Variants | Type of motor |
|----------|---------------|
| 11034053 | AC            |

### Dimensional data

| Variants | E (mm) | F (mm) | H (mm) | L (mm) | M (mm) | P (mm) | T (mm) | Y (mm) | Z (mm) | Ø (mm) |
|----------|--------|--------|--------|--------|--------|--------|--------|--------|--------|--------|
| 11034053 | 575    | 1155   | 905    | 910    | 60     | 945    | 960    | 940    | 115    | 710    |



### Airflow data

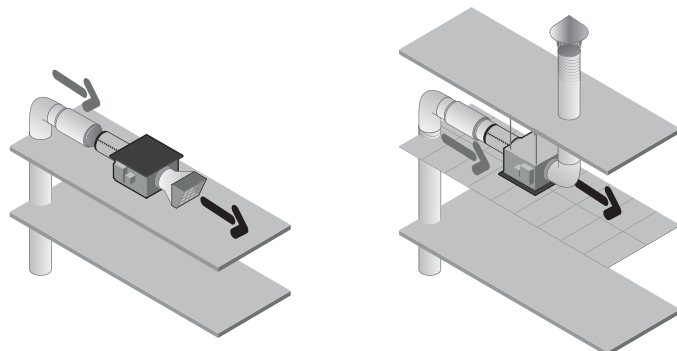
| Variants | Airflow (m³/h) |
|----------|----------------|
| 11034053 | 10000          |

11034053

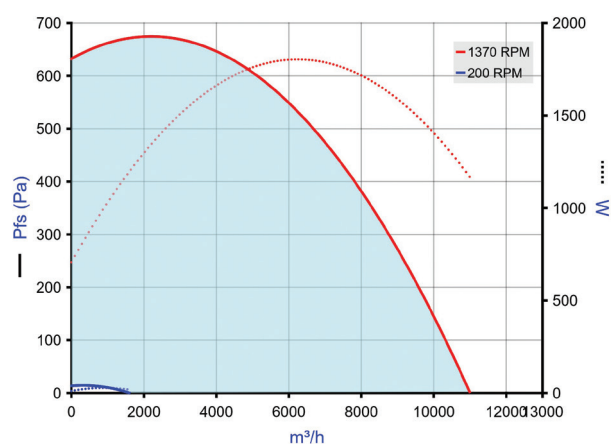
EasyVEC® Standard 10000 IP VAR STR CIRC DP

**Electrical datas**

| Variants | Maximum power (W) | Max. power | Max. power | Protection rating | Maximum current (A) | Power supply |
|----------|-------------------|------------|------------|-------------------|---------------------|--------------|
| 11034053 | 2050              | 2,05       | 2050       | IP24              | 13,2                | Single-phase |

**Installation**

EasyVEC-Compact

**Curve**

&gt; Aerulic curves drawn up as per standard NF EN ISO 5801.

&gt; P (Pa) = static pressure.

&gt; P (W) = power consumption.

**Weight (kg)**

160