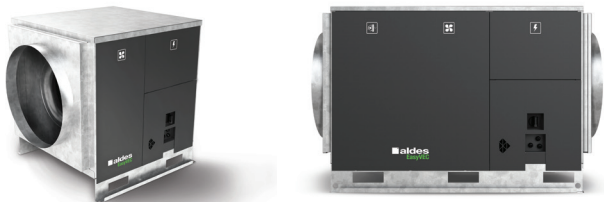


# 11034033

## EasyVEC® Standard 4000 IP VAR STR CIRC DP

The best-designed range of exhaust box fans on the market, making ventilation efficient, serene, and easy.



### PRODUCT BENEFITS

- wide range from 4000 to 12,000 m<sup>3</sup>/h,
- 100% recyclable.

### REGULATIONS AND COMPLIANCES

Technical Opinion no.: 14.5/16-2185\_V2

### Principles of operation

EasyVEC® Standard delivers unidirectional ventilation in commercial buildings, via air supply or exhaust.

### Product description

EasyVEC® Standard delivers unidirectional ventilation in commercial buildings by air supply or exhaust, to ensure adequate air quality and preservation of the building structure.

### Fields of application

Multi-occupancy residential housing, Refurbishment, Non-residential buildings, Mechanical extract ventilation systems

### Installation

- installation:
  - on anti-vibration slab as per DTU 68.3 recommendations,,
  - indoor or outdoor location,
  - sufficient space must be left in front of the box fan to avoid obstructing the access panel and allow maintenance of internal components.
  - for roof installation, preferably positioned out of the wind to limit pressure losses at the outlet.
- for better acoustic and aeraulic performance, we recommend that you:
  - install sound attenuators at the unit connections,
  - use the ALDES VIRTUO-FIX range of sealed accessories,
  - use MS PRO sealed flexible sleeves to muffle ductwork vibrations.

### Reference arguments

- Application:
  - centralised, very low-consumption unidirectional air supply or exhaust box fan for non-residential CMEV system,
  - new builds and refurbishment,
  - air supply /exhaust,
  - attic / equipment rooms / flat roofs,
  - indoor / outdoor.
- Description:
  - EasyVEC® Standard box fan,
  - easy to select: Selector PoWair® and Conceptor Ventilation design software,
  - easy to service: link to documentation via QR code, single access panel.

11034033

EasyVEC® Standard 4000 IP VAR STR CIRC DP

**Main characteristics**

- AC motor,
- backward curve impeller,
- galvanised panels Z275.
- multiple options and accessories:
- filter box,
- ISO coarse filter 60% ePM10 50%, ePM1 50-75%, ePM1 85%,
- filter replacement indicator,
- pressure switch.
- made in France.

**Supplementary characteristics**

- compatible with technical Approval for Modulated Ventilation Presence-Agito-CO2-Humidity-controlled no. 14.5/16-2185\_V1,
- ErP 2018,
- Eligible for ESC: BAT-TH-112, BAT-TH-125, BAT-EQ-123.

**Accessories**

| Description                                    | Variants |
|--|----------|
| Circuit breaker 4A - 6.3A                      | 11057054 |
| BCA Ø 500 - 30 kW - 6C                         | 11090781 |
| BCA Ø 500 - 36 kW - 6C                         | 11090782 |
| BCA Ø 500 - 12 kW - 3C                         | 11090775 |
| BCA Ø 500 - 18 kW - 6C                         | 11090780 |
| BCA R Tri regulated 3-phase coil Ø 500 - 9 kW  | 11090832 |
| BCA R Tri regulated 3-phase coil Ø 500 - 18 kW | 11090833 |
| Duct sensor +25/+90°C                          | 11090900 |
| Airflow control kit (20-300 Pa)                | 11090901 |
| Duct sensor -10/+35°C                          | 11090902 |
| Female rain hood + screen Ø 500 mm             | 11056374 |
| OCTA D500 sealed                               | 11094640 |
| OCTA with baffle D500                          | 11094995 |
| MS PRO V2 D500                                 | 11094301 |

**Filters**

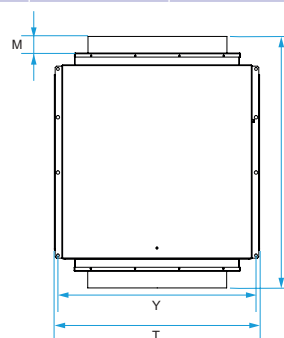
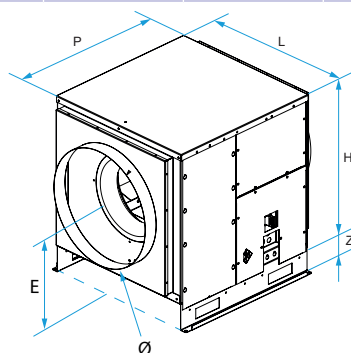
| Description             | Variants |
|-------------------------|----------|
| M5 filter EasyVEC® 4000 | 11034412 |
| F7 filter EasyVEC® 4000 | 11034415 |
| F9 filter EasyVEC® 4000 | 11034426 |
| G4 filter EasyVEC® 4000 | 11034409 |

**General data**

| Variants | Type of motor |
|----------|---------------|
| 11034033 | AC            |

**Dimensional data**

| Variants | E (mm) | F (mm) | H (mm) | L (mm) | M (mm) | P (mm) | T (mm) | Y (mm) | Z (mm) | Ø (mm) |
|----------|--------|--------|--------|--------|--------|--------|--------|--------|--------|--------|
| 11034033 | 450    | 910    | 665    | 690    | 60     | 700    | 740    | 720    | 115    | 500    |



# 11034033

## EasyVEC® Standard 4000 IP VAR STR CIRC DP

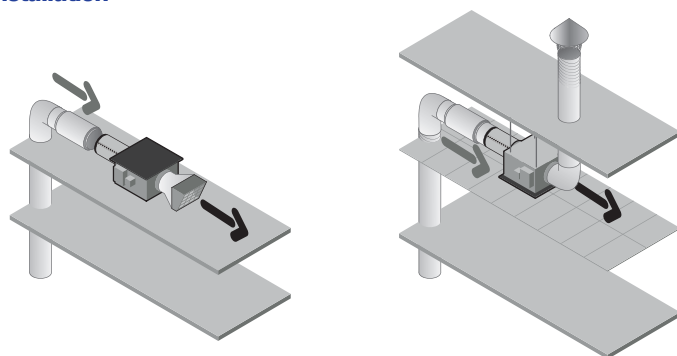
### Airflow data

| Variants | Airflow (m³/h) |
|----------|----------------|
| 11034033 | 4000           |

### Electrical datas

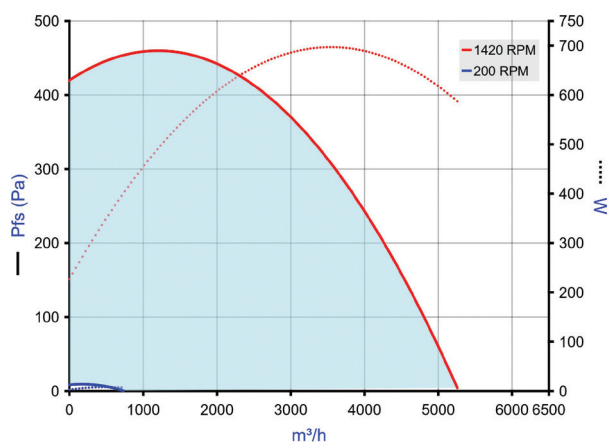
| Variants | Maximum power (W) | Max. power | Max. power | Protection rating | Maximum current (A) | Power supply |
|----------|-------------------|------------|------------|-------------------|---------------------|--------------|
| 11034033 | 720               | 0,72       | 720        | IP24              | 5.2                 | Single-phase |

### Installation



EasyVEC-Compact

### Curve



> Aerulic curves drawn up as per standard NF EN ISO 5801.

> P (Pa) = static pressure.

> P (W) = power consumption.

Weight (kg)

64