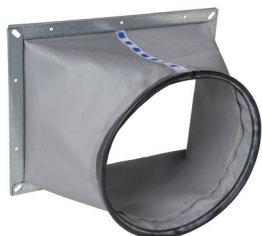


Heat and smoke exhaust opening and flap

11069050

Flexible sleeve rectangular/circular D355 VEX430/530



Product description

This flexible sleeve makes installation easy by transforming the rectangular duct to a circular duct while separating the unit from the ducting system to reduce the transmission of vibrations.

Fields of application

Multi-occupancy residential housing, New, Refurbishment, Non-residential buildings

Installation

- the flexible sleeves can be installed on air supply, extract, outlet or intake sections,
- compatible with air inlet and outlet dampers.

Main characteristics

- glass fibre fabric, PE coated, with M0 fire certification,
- TPE peripheral seal on the rectangular section,
- EPDM seal on the circular section, held by the insertion of a metal ring,
- galvanised steel frame Z275.

Dimensional data

Variants	H (mm)	L (mm)	P (mm)	Ø connection (mm)
11069050	370	770	300	355