

Duct grille

11050106
GD102 F1 525X225

The GD 102 indoor duct grille is used for air extraction in commercial buildings.



Grille GD 102

PRODUCT BENEFITS

- suitable for circular and oblong ducts in all standard diameters.

Principles of operation

The GD 102 indoor duct grille operates on extraction for all ventilation and air conditioning systems in commercial buildings. Installed on cylindrical or oblong duct.

Product description

The GD 102 indoor duct grille is used for air extraction in all ventilation and air conditioning systems in commercial buildings. Installed on cylindrical or oblong duct. Single-deflection grille with individually adjusted movable vertical vanes, 20 mm pitch, galvanised steel with natural hue finish.

Fields of application

New, Refurbishment, Non-residential buildings

Installation

- attached to circular or oblong ducts,
- visible screw attachment in frame.

Main characteristics

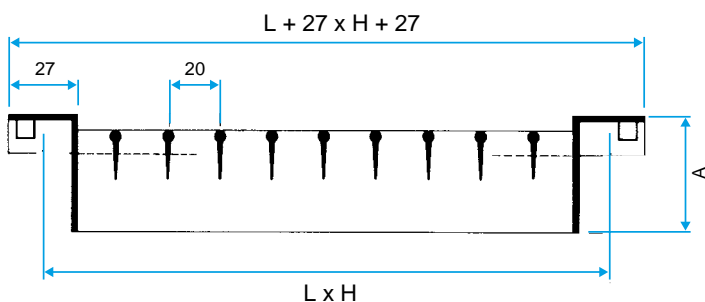
- single deflection terminal with movable, individually adjustable vertical fins, 20 mm pitch,
- galvanised steel with natural finish,
- visible screw attachment in the frame on cylindrical or oblong duct.
- dimensions range from 325 x 75 to 1225 x 225 mm.

General data

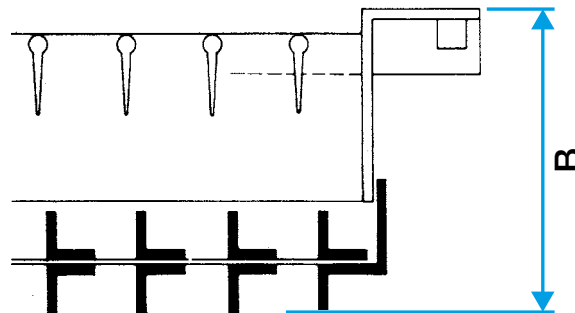
References	Type of finish	Colour
11050106	Galvanised steel	Galvanised steel

Dimensional data

References	A (mm)	B (mm)	C (mm)	H (mm)	L (mm)	Max. Ø D duct (mm)	Min. Ø D duct (mm)
11050106	56	100	164	225	525	1600	630



Grille GD 102 seule



Grille GD 102 avec registre H monté

Duct grille

11050106

GD102 F1 525X225

Airflow data

References	Comfort airflow (air supply with damper N 100% open) for Lw < NR 25 (m³/h)
11050106	1000