

## Fire damper

# 11043134

## ISONE® 2.1 FTE70 Ø 250 mm

ISONE® 2.1 dampers are simple to select: a single model for all partitions and all fire resistance levels.



Clapet ISONE® 2.1 circulaire

### PRODUCT BENEFITS

- Single damper model for all partitions: easy to select
- Ergonomic quick reset handle: 2 seconds suffice.
- Optional stainless steel pin for harsh environments
- Optional remote control box, 0.7 m or 3 m cord
- ALDES SecurONE application for damper data collection and sharing
- Single mechanism, from the simplest to the highest-spec damper: easy to choose, install and maintain

### Principles of operation

- The damper is open in standby position.
- It opens when instructed by the FACP or thermal rod and moves into safety position (closed).
- Being motorised, it can be reset remotely.

### Product description

Fire dampers for non-residential buildings (public access building, high-rise)

They restore the fire resistance of partition walls crossed by a ventilation duct.

Equipped with 70°C fusible link trip device by default

Controllable by electromagnetic coil trip device: 24/48 V DC current emission; 24 V DC or 48 V DC current break

Reset motor 24/48 V DC

Fire resistance up to 120 minutes on all common partition walls.

### Fields of application

New, Refurbishment, Non-residential buildings

### Installation

- Mortar-free installation on lightweight walls, even with post-fitted frame
- Flush-mounted installation on:
  - Concrete and aerated concrete wall/slab
  - Plaster block wall
  - Type A plasterboards (1h) and type F (2h)
- Remote installation on PROMAT / GEOSTAF
- Positioned on lightweight walls using installation brackets
- EXAP EN 15882-2:2015, rules X.45 and X.46: extended opening dimensions
- Respect the fire rating reports when installing

### Main characteristics

- Certified and compliant with NF S 61937-5 and NF 537
- CE marked as per EN 15650: 1812-CPR-1837
- Class C airtight properties as per EN 1751 as standard
- EI 120 S - 500 Pa on concrete / aerated concrete walls and slabs, type F plasterboard, remote installation on PROMAT / Geostaf
- EXAP EN 15882-2:2015, rules X.45 and X.46.
- Range from D100 mm to D900 mm

### REGLEMENTATIONS AND COMPLIANCES

PV CE number : 1812-CPR-1837

## Fire damper

# 11043134

## ISONE® 2.1 FTE70 Ø 250 mm

## Supplementary characteristics

- Fully upgradable mechanism
- Single damper adaptable to all walls
- Lightweight wall installation with post-fitted frame
- Reset handle indicating damper position
- Large electrical connection box
- Optional stainless steel pin for harsh environments
- Optional remote control unit
- Low pressure loss

## Accessories

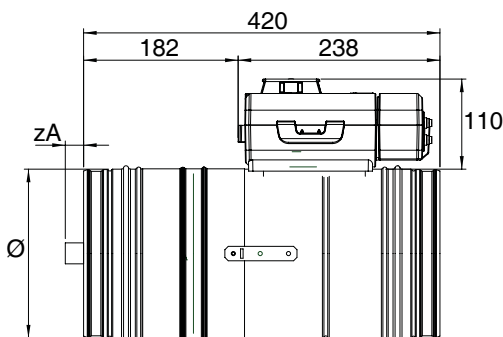
| Désignations   | References |
|--|------------|
| Remote box 0.7 m for FDCU1 limit switch and current make coil ISONE®2.1 PM small     | 11043324   |
| Remote box 3 m for FDCU1 limit switch and current make coil ISONE®2.1 PM small       | 11043325   |
| Adapter lead kit control pack ISONE®2.1 PM small                                     | 11043339   |
| Remote box 0.7 m for FDCU1+2 limit switches and current make coil ISONE®2.1 PM small | 11043396   |
| Remote box 3 m for FDCU1+2 limit switches and current make coil ISONE®2.1 PM small   | 11043397   |

## General data

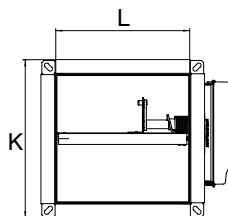
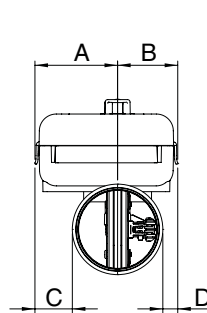
| References | Free air passage section (dm <sup>2</sup> ) |
|------------|---|
| 11043134   | 4,22  |

## Dimensional data

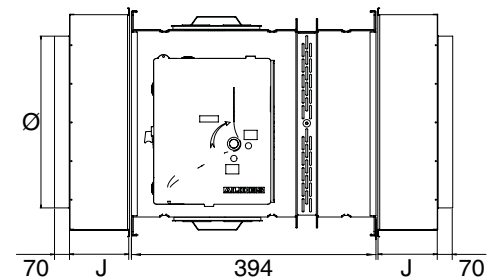
| References | A (mm) | B (mm) | Ø (mm) | Weight (kg) |
|------------|--------|--------|--------|-------------|
| 11043134   | 97     | 70     | 250    | 3,7         |



Encombrement ISONE®2.1 PM



Encombrement ISONE®2.1 GM



- ISONE® 2.1 PM: D100 to D500
- ISONE® 2.1 GM: D560 to D900

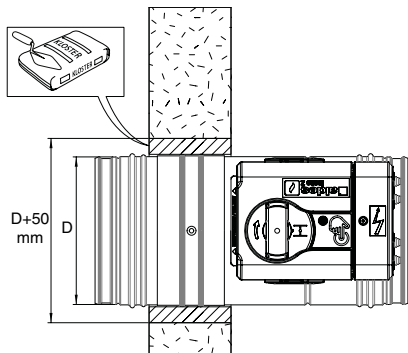
Fire damper

11043134  
ISONE® 2.1 FTE70 Ø 250 mm

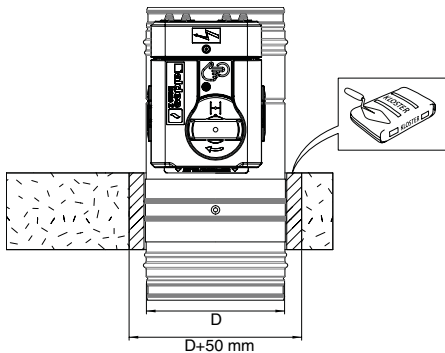
Airflow data

| References | Pressure loss at 2 m/s (Pa) | Pressure loss at 4 m/s (Pa) | Pressure loss at 6 m/s (Pa) | Pressure loss at 8 m/s (Pa) | Pressure loss at 10 m/s (Pa) | Pressure loss at 12 m/s (Pa) |
|------------|-----------------------------|-----------------------------|-----------------------------|-----------------------------|------------------------------|------------------------------|
| 11043134   | 1                           | 4                           | 8                           | 13                          | 20                           | 29                           |

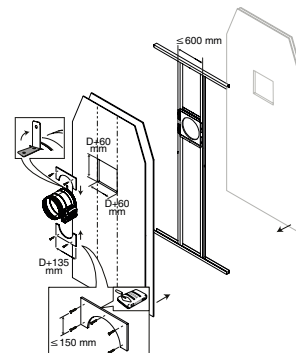
Installation visual 1



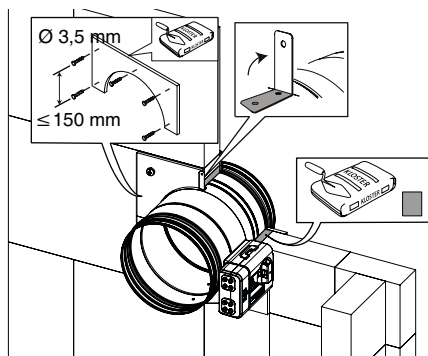
ISONE®2.1 circulaire sur mur béton



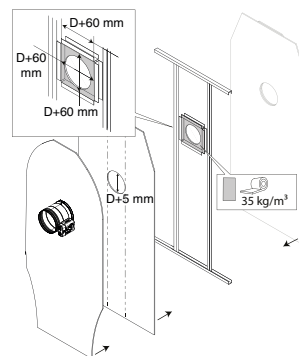
ISONE®2.1 circulaire sur dalle béton



ISONE®2.1 circulaire sur cloison légère 120 minutes



ISONE®2.1 circulaire sur cloison carreaux de plâtre 120 minutes



ISONE®2.1 circulaire sur cloison légère 60 minutes chevrete post montage

Principe de fonctionnement



- > 1: installation bracket
- > 2: lip seal
- > 3: blade with airtight seal
- > 4: galvanised steel tunnel body (sleeve)
- > 5: manufacturer's plate
- > 6: ISONE®2.1 PM mechanism