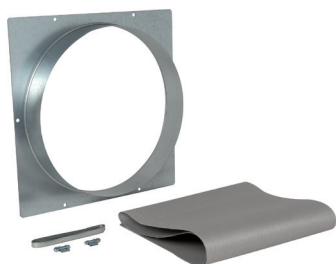


CO2 sensor

11025081

M0 outlet sleeve + EasyVEC® connector T2 Ø 250 mm



### Product description

This kit is used to separate the fan unit from the extract system (as per requirements of DTU 68.3), to prevent the transmission of vibrations. It is used to duct the unit outlet using a connector compatible with the EasyVEC range, a flexible sleeve and clamp collars. Select a kit according to the fan unit.

### Fields of application

Multi-occupancy residential housing, New, Refurbishment, Non-residential buildings

### Installation

- for installation between the extraction unit and the rigid galvanised ducting.

### Reference arguments

Flexible outlet sleeve + EasyVEC connection T2 Ø 250 mm

### Main characteristics

- deformable fabric in material certified A2-s1, d0,
- galvanised steel serrated clamp collars.

### Contents of kits

Connector compatible with EasyVEC®, flexible sleeve and two clamp collars.

### Dimensional data

| Variants | Ø connection (mm) |
|----------|-------------------|
| 11025081 | 250               |