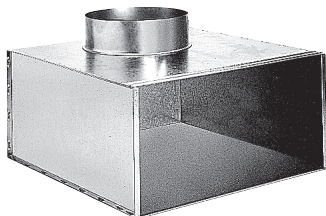


## Transfer grille

11053602

ME Plenum F3 300X100/D125 PC cfg



## Product description

This plenum is used on air supply or extract via the grilles SC, AC (101, 102, 121, 123, 125) and GRIDLINED Wall.

## Fields of application

New, Refurbishment, Non-residential buildings

## Installation

- concealed grille attachment using friction clips.

## Main characteristics

- galvanised steel,
- connector on side.

## Dimensional data

Variants	H (mm)	L (mm)	P (mm)
11053602	139	314	215

