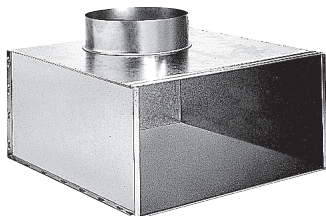


Transfer grille

11053599

ME Plenum F3 300X300/D250 PC cfg



Product description

This plenum is used on air supply or extract via the grilles SC, AC (101, 102, 121, 123, 125) and GRIDLINED Wall.

Fields of application

New, Refurbishment, Non-residential buildings

Installation

- concealed grille attachment using friction clips.

Main characteristics

- galvanised steel,
- connector on side.

Dimensional data

Variants	H (mm)	L (mm)	P (mm)
11053599	339	314	340

