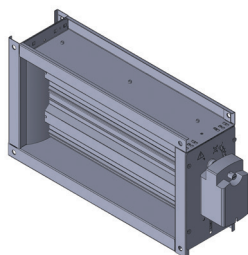


## Façade outlet

11069020

## MOTORISED SHUT-OFF DAMPER VEX550



## Product description

The dampers are used to isolate the air inlet and outlet when the unit is not operational, to prevent air entering the building. Their motors are controlled directly by the unit control.

## Fields of application

Multi-occupancy residential housing, New, Refurbishment, Non-residential buildings

## Installation

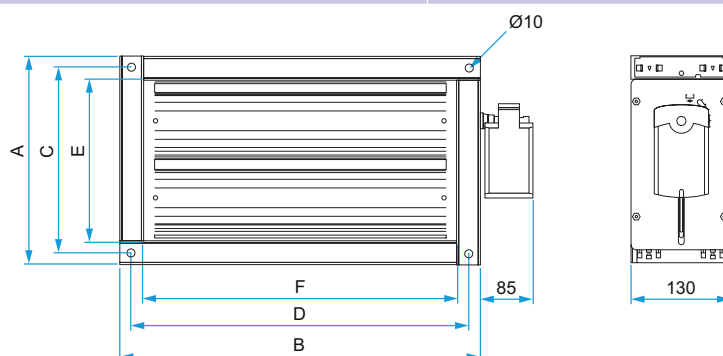
- supplied in pack of 2 with:
  - pre-wired servomotors,
  - an "RG" link cable,
  - a junction box,
  - self-tapping screws,
  - M8 screws to attach the damper in the unit opening frame,
  - a self-adhesive EPDM seal section 5x10 mm for application on the damper flange to ensure structural air tightness.
  - compatible with the rectangular-circular adapters and non-insulated flexible sleeves.

## Main characteristics

- galvanised steel frame and aluminium dampers,
- class B airtight performance for casing, dampers class 2 in negative pressure and class 3 in positive pressure as per standard NF EN 1751,
- IP54 (on/off) servomotor with return spring used to close dampers and isolate ducts if the power is cut off,
- connection cable to controller supplied.

## Dimensional data

Variants	P (mm)	Weight (kg)
11069020	130	12,57



## Electrical datas

Variants	Frequency (Hz)
11069020	50/60

Façade outlet

11069020  
MOTORISED SHUT-OFF DAMPER VEX550

Regulatory data

Variants	Fire protection rating
11069020	C