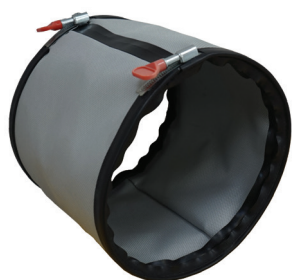


Heat and smoke exhaust opening and flap

# 11094300

## MS PRO V2 D400



### Product description

The MS PRO V2 flexible sleeve connects a fan unit to the rest of the system while extending the performance of rigid sealed ducting. The MS PRO V2 includes a female connector and an airtight EPDM seal at each end, so it can be slotted directly onto the fan unit branch connector and onto an accessory (bend, RPC, RF, etc.).

### Fields of application

Multi-occupancy residential housing, New, Refurbishment, Non-residential buildings

### Main characteristics

- available in diameters 125 to 710,
- simple and fast to install using clamp collars built into the sleeve: slots directly onto fan unit branch connector or onto an accessory (bend, RPC, RF) on the ducting side,
- M0 fire certification for product: Report no. 19269-16,
- class C airtight performance as per EN 15727,
- operating ranges:
  - pressure: -750 Pa negative pressure, 2000 Pa positive,
  - Continuous temp°: -20°C to +90°C,
  - Peak temp°: max. +400 °C.

### Dimensional data

Variants	Ø connection (mm)
11094300	400