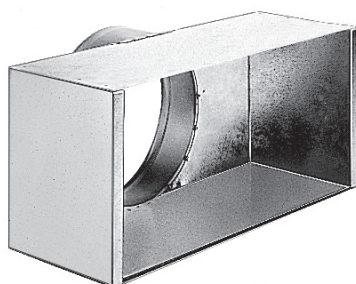


## Transfer grille

11053656

MTF3 1000X300/2XD250 PLENUM PA



## Product description

This plenum is used on air supply or extract via the grilles SC, AC (101, 102, 121, 123, 125) and GRIDLINED Wall.

## Fields of application

New, Refurbishment, Non-residential buildings

## Installation

- concealed grille attachment using friction clips.

## Reference arguments

- SGS: galvanised steel adjustment damper with counter-rotary movement. Attached to grille using S-clips.
- F4: galvanised steel mounting frame for sealing in mortar. Suitable for F3 attachment (clips) of standard grilles. Supplied as 4 separate items for assembly on site.
- MT F3: connector plenum with rear connection. Galvanised steel construction. Two models depending on connection diameter. - "90°" model if connection diameter  $\geq$  nominal height of grille (indicated by \*). - "83°" model if connection diameter  $\leq$  nominal height of grille.
- ME F3: connector plenum with side connection. Galvanised steel construction.
- MEI (5) F3: connector plenum with rear connection. Galvanised steel construction. Insulated on 5 sides (polyurethane foam).

The MT F3 and ME F3 plenums are suited to the F3 attachment method (clips) of standard grilles and do not require the use of an F4 mounting frame.

## Main characteristics

- galvanised steel,
- rear connection.

## Dimensional data

Variants	H (mm)	L (mm)
11053656	300	1000

