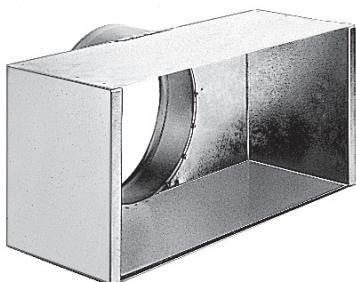


Transfer grille

11053648

MTF3 400X200/D200 PLENUM PA



Product description

This plenum is used on air supply or extract via the grilles SC, AC (101, 102, 121, 123, 125) and GRIDLINED Wall.

Fields of application

New, Refurbishment, Non-residential buildings

Installation

- concealed grille attachment using friction clips.

Reference arguments

- Fixed horizontal front bars with 13 mm pitch, 0° incline.
- Anodised aluminium natural satin finish.
- Concealed attachment using friction clips.

Main characteristics

- galvanised steel,
- rear connection.

Dimensional data

| Variants | H (mm) | L (mm) |
|----------|--------|--------|
| 11053648 | 200 | 400 |

