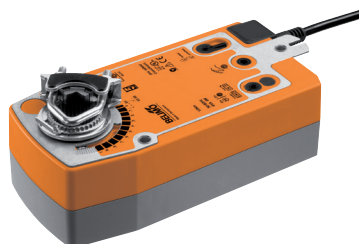


Axial heat and smoke exhaust fan

11055045

Motor Sfa-S2 On/Off 24/230V



### Product description

These proportional or on/off motors, with or without spring return, 1 or more contacts, are used to drive circular and rectangular dampers as well as the MR Max motorised airflow regulator

### Fields of application

New, Refurbishment, Non-residential buildings

### Installation

- fitted directly to the damper plate using the clamp collar,
- proportional motor: adjustable motor travel using stops.

### Reference arguments

• Belimo servomotor SFA-S2 On/Off with return spring. • Torque: 20 Nm. • Voltage: AC 24...240 V/DC 24...125 V. • Travel time: 75 sec / 90°. • Protection rating: IP54. • Connection using 1 m PVC cable. • Rotation direction: selectable. • 2 auxiliary contacts 1x10% fixed / 1x11...90% adjustable. • To drive CRGE rectangular airtight dampers.

### Main characteristics

- proportional or on/off,
- with or without spring return,
- information reporting: 1 or more contacts,
- 24 or 230V,
- torque 2 to 20 N.m,
- IP54.