

Fire damper accessory

11043259

OBLONG RING ISONE®2.1 645x265/700x300

**Product description**

Connection flange between rectangular dampers and oblong ventilation ducting.

Fields of application

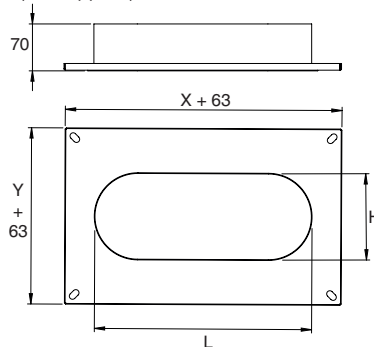
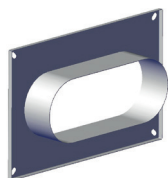
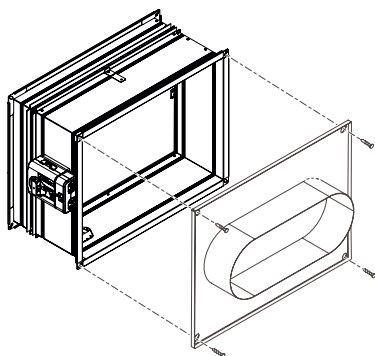
New, Refurbishment, Non-residential buildings

Installation

Galvanised steel ring Z275

Main characteristics

Screw the oblong ring onto the damper flange using self-tapping screws (not supplied)

**Installation**

Installation of oblong ring on mechanism side of the ISONE 2 damper