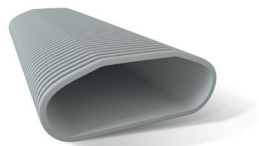


Slot diffuser

11091857

OPTIFLEX® grey oval anti-bacterial duct 20 m

The first oval ventilation ducting for easy and reliable installation and which meets indoor air quality requirements.



PRODUCT BENEFITS

- leaktight ducting,
- easy to install,
- strong.

Product description

OPTIFLEX oval ducts offer a semi-rigid plastic ducting solution to connect ventilation terminals to the fan unit in narrow non-heated areas of an individual house. They ensure the hygiene and quality of indoor air.

Fields of application

Multi-occupancy residential housing, Individual residential housing, New, Refurbishment

Installation

- accessories easily slotted into ducts using OPTIFLEX seals sold separately,
- use OPTIFLEX seals sold separately to ensure an airtight seal,
- lyre collars or perforated strips to attach ducts available as accessories,
- in all cases, to prevent pressure losses and sound propagations, limit the use of bends to a minimum.

Reference arguments

Application:

- Perfectly suitable for exhaust or heat recovery systems
- New builds or refurbishment
- Installation in suspended ceilings and partition walls
- Semi-rigid air distribution network for individual and multi-occupancy housing

Description:

- Easy to install and strong
- Smooth interior
- Dimensions: 132 x 52 mm, equivalent to D90
- Material: pure HDPE with anti-static and anti-bacterial treatments
- Flat duct for easy installation in confined configurations

Slot diffuser

11091857

OPTIFLEX® grey oval anti-bacterial duct 20 m

Main characteristics

- semi-rigid plastic ducts,
- diameter: 132 x 52 mm, equivalent Ø 90 mm,
- Material: HDPE with anti-static and anti-bacterial (silver ion) treatments,
- packaging: 20 m reel,
- temperature range: -5 to +60°C.

Accessories

Description	Variants
Mixed bend connector Ø 75	11091879
Mixed straight connector OPTIFLEX® Ø 75	11091880
Distribution unit 5 branch connections	11091881
Mixed straight connector OPTIFLEX® Ø 90	11091896
Mixed bend connector Ø 90	11091897
Metal unit 13P 160	11091986
Metal unit 20P 160	11091987
OPTIFLEX® 90° horizontal bend for oval duct	11091858
OPTIFLEX® 90° vertical bend for oval duct	11091859
OPTIFLEX® rotary connector for oval duct	11091860
Pack of 10 OPTIFLEX® oval airtight connectors	11091861
Pack of 5 OPTIFLEX® oval duct plugs	11091862
Pack of 10 oval clamp collars	11091863
Pack of 10 mounting flanges	11091864
Sleeve Ø 125 90° 1P	11091865
Sleeve Ø 125 90° 2P	11091866
Sleeve Ø 125 straight 1P	11091867
Rectangular sleeve 90° 1P	11091868
Airflow regulator	11091870
Flat distribution unit 11 branch connections	11091883
Distribution box fan	11091884
Unit Y-piece PE 160	11091885
Unit funnel PE 125	11091886
Pack of 5 PE unit airtight connectors	11091887
Unit bar PE (4-pack)	11091927
PE horizontal unit bend	11091928
PE vertical unit bend	11091929

General data

Variants	Maximum use temperature (°C)	Minimum use temperature (°C)
11091857	60	-5

Dimensional data

Variants	L (mm)	Ø (mm)	Ø equivalent (mm)	Rated Ø duct (mm)	Weight (kg)
11091857	20000	132x52	90	132x52	12