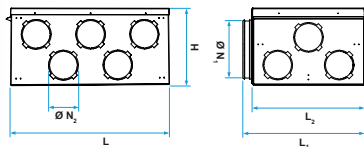


Ventilation box fan

11027175

OPTIFLEX® metal unit 16 connections for circular ducts with Ø160
160-B

OPTIFLEX metal distribution units with circular connections can be used for both supply and exhaust air.



PRODUCT BENEFITS

- Class B air tightness,
- Controlled pressure loss,
- Small footprint for installation in technical ceilings.

Product description

The OPTIFLEX metal distribution unit range comprises four units:

- for wall and ceiling installations: 1 unit with 16 connections and 1 unit with 20 connections depending on the size of the dwelling.
- for slab installations: 1 unit with 11 connections and 1 unit with 20 connections depending on the size of the dwelling.

All units have a removable hatch for unit maintenance and duct cleaning.

OPTIFLEX distribution units are made of sheet metal with no sharp edges and are soundproofed to class B.

Fields of application

Multi-occupancy residential housing, Individual residential housing, New

Installation

- Attachment brackets are supplied with each unit (2 brackets + screws for the 16-connection model and 4 brackets for the 20-connection model).
- Unused connections do not need to be plugged.
- The choice of D75 or D90 unit connections depends on the diameter of the duct to be connected.
- Easy maintenance with a maintenance hatch accessible without tools or adhesives.

Curve

