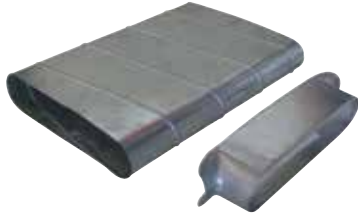


Connector

11063573

PDO GALVA - 350x100 - D320

The PDO oblong 90° branch connector makes a right-angle branch on a galvanised circular duct.



Oblong 90° Branch Connector

PRODUCT BENEFITS

- small size for high airflow,
- good airtight performance and controlled pressure losses,
- easy to install and maintain (no inaccessible corners).

Product description

The PDO oblong 90° branch connector makes a right-angle branch on a galvanised circular duct.

Fields of application

Multi-occupancy residential housing, New, Refurbishment, Non-residential buildings

Installation

- when installing, pay special attention to pressures losses, noise and leaks that may be generated,
- easy assembly of interlocking accessories: ducts are female, accessories are male,
- final seal requires sealant and/or perforated strip,
- attached to duct using self-tapping screws (4 to 6 depending on diameter).

Reference arguments

Application:

- Oblong accessories for installation of ventilation systems in confined spaces (suspended ceiling, horizontal side flues conveying high airflow, etc.)
- Adds a 90° connection to a circular section of an oblong duct.

Description:

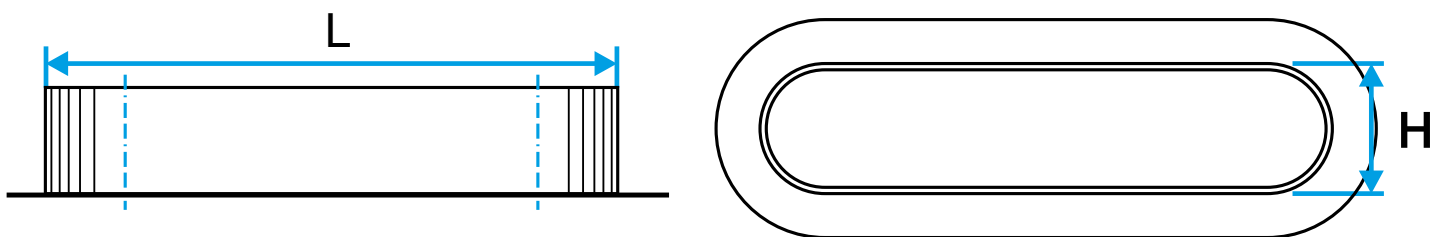
- Straight oblong 90° connector diameter 320 mm galvanised steel.
- Length 350 mm and height 100 mm

Main characteristics

- standard dimensions (20 oblong sections),
- galvanised steel as per EN 10346 ensuring uniformity of coating,
- MO fire certification.

Dimensional data

| References | H (mm) | L (mm) | Ø (mm) |
|------------|--------|--------|--------|
| 11063573 | 100 | 350 | 320 |



Dimensional drawing Oblong 90° branch connector

Connector

11063573

PDO GALVA - 350x100 - D320

Regulatory data

| References | Fire protection rating |
|------------|------------------------|
| 11063573 | M0 |