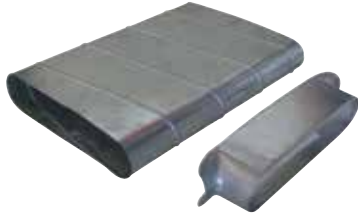


## Connector

# 11066481

## PDO GALVA - 425X130 - D415

The PDO oblong 90° branch connector makes a right-angle branch on a galvanised circular duct.



Oblong 90° Branch Connector

### PRODUCT BENEFITS

- small size for high airflow,
- good airtight performance and controlled pressure losses,
- easy to install and maintain (no inaccessible corners).

### Product description

The PDO oblong 90° branch connector makes a right-angle branch on a galvanised circular duct.

### Fields of application

Multi-occupancy residential housing, New, Refurbishment, Non-residential buildings

### Installation

- when installing, pay special attention to pressures losses, noise and leaks that may be generated,
- easy assembly of interlocking accessories: ducts are female, accessories are male,
- final seal requires sealant and/or perforated strip,
- attached to duct using self-tapping screws (4 to 6 depending on diameter).

### Reference arguments

Application:

- Oblong accessories for installation of ventilation systems in confined spaces (suspended ceiling, horizontal side flues conveying high airflow, etc.)
- Adds a 90° connection to a circular section of an oblong duct.

Description:

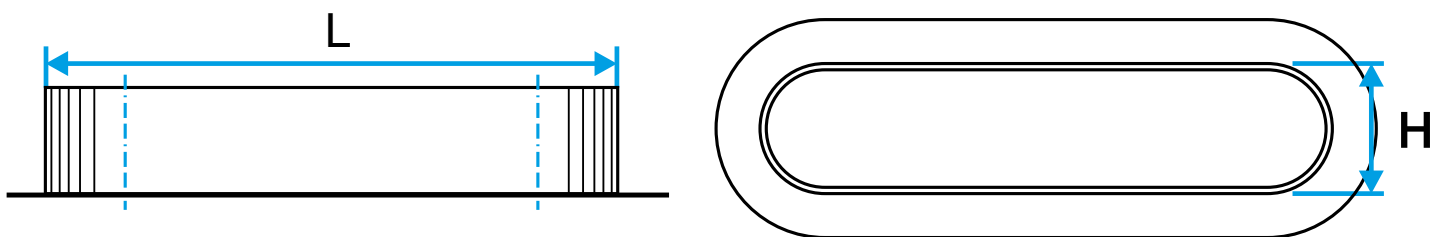
- Straight oblong 90° connector diameter 415 mm galvanised steel.
- Length 425 mm and height 130 mm

### Main characteristics

- standard dimensions (20 oblong sections),
- galvanised steel as per EN 10346 ensuring uniformity of coating,
- MO fire certification.

### Dimensional data

References	H (mm)	L (mm)	Ø (mm)
11066481	130	425	415



Dimensional drawing Oblong 90° branch connector

### Connector

# 11066481

## PDO GALVA - 425X130 - D415

### Regulatory data

References	Fire protection rating
11066481	M0