

Connector

11096615

PEP ALU FLAT CONNECTOR - D200

The PEP aluminium flat 90° branch connector makes a right-angle branch on an aluminium rectangular duct.



Piquage Equerre sur Plat en aluminium

PRODUCT BENEFITS

- range compliant with gas CMEV requirements,
- suited to systems operating in saline atmospheres.

Product description

The PEP aluminium flat 90° branch connector makes a right-angle branch on an aluminium rectangular duct.

Fields of application

Multi-occupancy residential housing, New, Refurbishment, Non-residential buildings

Installation

- when installing, pay special attention to pressures losses, noise and leaks that may be generated,
- easy assembly of interlocking accessories: ducts are female, accessories are male,
- final seal requires sealant and/or perforated strip,
- attached to duct using self-tapping screws (4 to 6 depending on diameter).

Reference arguments

Application:

- Serves to add a 90° bend diameter 200 mm to oblong or rectangular flat ducting in a Gas CMEV system

Description:

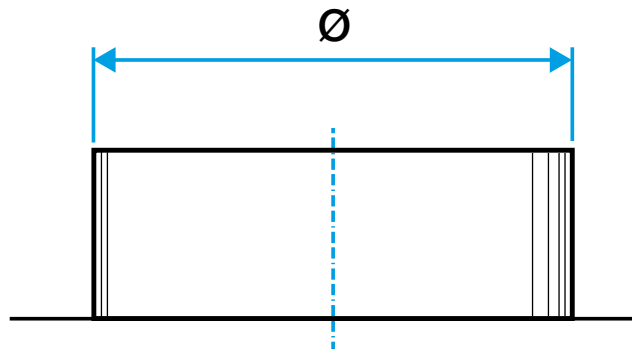
- Aluminium flat connector diameter 200 mm

Main characteristics

- available in diameters from 125 to 500,
- aluminium 1050A-H18 (formerly A5) compliant with DTU 68.3 for gas CMEV,
- M0 fire certification.

Dimensional data

References	Ø (mm)
11096615	200



Dimensional drawing Flat 90° Branch Connector aluminium

Connector

11096615

PEP ALU FLAT CONNECTOR - D200

Regulatory data

References	Fire protection rating
11096615	M0