

**Connector****11094617**  
**PEP GALVA FLAT CONNECTR - D315**

The PEP flat 90° branch connector makes a right-angle branch on a galvanised oblong or rectangular duct.



Piquage Equerre sur Plat 90°

**Product description**

The PEP flat 90° branch connector makes a right-angle branch on a galvanised oblong or rectangular duct.

**Fields of application**

Multi-occupancy residential housing, New, Refurbishment, Non-residential buildings

**Installation**

- when installing, pay special attention to pressures losses, noise and leaks that may be generated,
- easy assembly of interlocking accessories: ducts are female, accessories are male,
- final seal requires sealant and/or perforated strip,
- attached to duct using self-tapping screws (4 to 6 depending on diameter).

**Reference arguments**

Application:

- Serves to add a 90° bend diameter 315 mm to oblong or rectangular flat ducting.

Description:

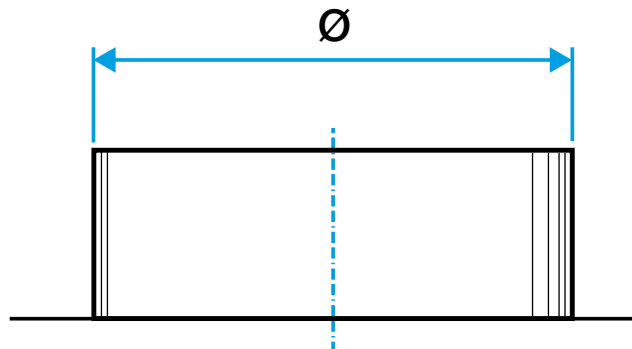
- Galvanised steel damper diameter 315 mm

**Main characteristics**

- available in diameters from 80 to 900,
- galvanised steel as per EN 10346 ensuring uniformity of coating,
- M0 fire certification.

**Dimensional data**

References	Ø (mm)
11094617	315



Dimensional drawing flat 90° branch connector

Connector

# 11094617

PEP GALVA FLAT CONNECTR - D315

Regulatory data

References	Fire protection rating
11094617	M0