

Connector**11094621**
PEP GALVA FLAT CONNECTR - D630

The PEP flat 90° branch connector makes a right-angle branch on a galvanised oblong or rectangular duct.



Piquage Equerre sur Plat 90°

Product description

The PEP flat 90° branch connector makes a right-angle branch on a galvanised oblong or rectangular duct.

Fields of application

Multi-occupancy residential housing, New, Refurbishment, Non-residential buildings

Installation

- when installing, pay special attention to pressures losses, noise and leaks that may be generated,
- easy assembly of interlocking accessories: ducts are female, accessories are male,
- final seal requires sealant and/or perforated strip,
- attached to duct using self-tapping screws (4 to 6 depending on diameter).

Reference arguments

Application:

- Serves to change direction of oblong or rectangular flat ducting by 90° diameter 630 mm

Description:

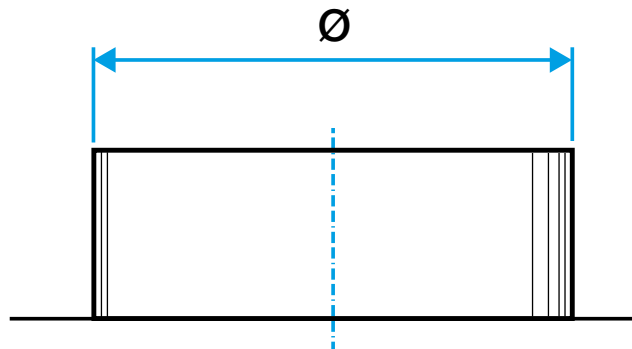
- Flat connector galvanised steel diameter 630 mm

Main characteristics

- available in diameters from 80 to 900,
- galvanised steel as per EN 10346 ensuring uniformity of coating,
- M0 fire certification.

Dimensional data

References	Ø (mm)
11094621	630



Dimensional drawing flat 90° branch connector

Connector

11094621

PEP GALVA FLAT CONNECTR - D630

Regulatory data

References	Fire protection rating
11094621	M0