

## Connector

# 11094611

## PEP GALVA FLAT CONNECTR - D80

The PEP flat 90° branch connector makes a right-angle branch on a galvanised oblong or rectangular duct.



Piquage Equerre sur Plat 90°

### Product description

The PEP flat 90° branch connector makes a right-angle branch on a galvanised oblong or rectangular duct.

### Fields of application

Multi-occupancy residential housing, New, Refurbishment, Non-residential buildings

### Installation

- when installing, pay special attention to pressures losses, noise and leaks that may be generated,
- easy assembly of interlocking accessories: ducts are female, accessories are male,
- final seal requires sealant and/or perforated strip,
- attached to duct using self-tapping screws (4 to 6 depending on diameter).

### Reference arguments

Application:

- Serves to change direction of oblong or rectangular flat ducting by 90° diameter 80 mm

Description:

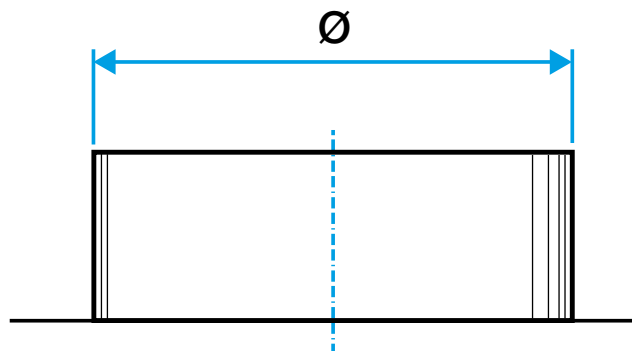
- Flat connector galvanised steel diameter 80 mm

### Main characteristics

- available in diameters from 80 to 900,
- galvanised steel as per EN 10346 ensuring uniformity of coating,
- M0 fire certification.

### Dimensional data

References	Ø (mm)
11094611	80



Dimensional drawing flat 90° branch connector

Connector

11094611

PEP GALVA FLAT CONNECTR - D80

Regulatory data

References	Fire protection rating
11094611	M0