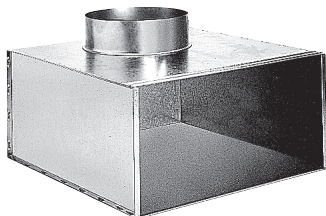


Transfer grille

11053689

PLEN. ME F3 600X600/D355 PC



Product description

This plenum is used on air supply or extract via the grilles SC, AC (101, 102, 121, 123, 125) and GRIDLINED Wall.

Fields of application

New, Refurbishment, Non-residential buildings

Installation

- concealed grille attachment using friction clips.

Reference arguments

- Square mesh grille 15x15 mm (AC 123) or perforated plate with 45% free surface (SC 125).
- AC models: anodised aluminium, natural satin finish.
- SC models: steel with epoxy paint finish, RAL 9010 white.
- Concealed attachment using friction clips.

Main characteristics

- galvanised steel,
- connector on side.

Dimensional data

Variants	H (mm)	L (mm)
11053689	600	600

