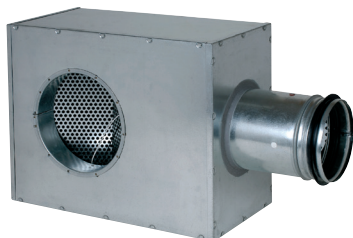


Collective static heat exchanger

11053311

PLENUM LRE842/883 F0 D160/160



### Product description

This plenum is used on air supply or extract via circular diffusers SC 831, SC 832TP, A 842 TP, A842, AR 883, AR 883 Thermo, SR 861 and SF 861 T.

### Fields of application

New, Refurbishment, Non-residential buildings

### Installation

- concealed attachment to diffuser using side screws directly in the neck,
- assembly attached to concrete slab using tabs on plenum.

### Reference arguments

- Pressed steel circular cones, surface-mounted.
- Epoxy paint finish, RAL 9010 white.
- Visible screw attachment to ceiling in external cone and FR attachment ring or BY damper.
- Connection to circular ducts.

### Main characteristics

- galvanised steel,
- circular connection on diffuser,
- side branch connection.

### Dimensional data

Variants	H (mm)	L (mm)
11053311	220	220