

11039501

ProtectONE® TA 225 1SP

ProtectONE® TA 1SP is an F400-120 1-speed smoke and heat exhaust box fan for commercial and industrial premises.



PRODUCT BENEFITS

- easy airflow adjustment with the exclusive ProtectONE® Adapt device,
- can be fully dismantled as standard,
- thermal insulation for installation in equipment rooms.

REGLEMENTATIONS AND COMPLIANCES

PV CE number : 1812-CPR-1548

Principles of operation

When commanded by the FACP, the safety box will activate ProtectONE® T in smoke exhaust mode to extract smoke. The box will then switch to “default” mode, then “standby”.

Product description

ProtectONE® TA 1SP is an F400-120 1-speed smoke and heat exhaust box fan for commercial and industrial premises. It features a belt-driven forward curve impeller. The ProtectONE® Adapt adjustment device can adjust the exhaust airflow easily at any time.

Fields of application

New, Refurbishment, Non-residential buildings

Installation

- indoors or outdoors,
- indoor installation: use thermal-acoustic insulation option (EN 12101-3),
- outdoor installation: use rain hood + bird screen,
- proximity switch supplied fitted and wired, with position contacts.

Main characteristics

- complies with CE marking 1812-CPR-1548,
- certified EFECTIS F400-120 as per EN12101-3,
- safety box compliant with NF standards (NF S61-937-1, NFS61937-9, NF 537),
- belt-driven exhaust box fan,
- 9 models for airflow from 1,000 to 40,000 m³/h,
- single-speed motor generating 1.1 kW to 22 kW,
- balanced forward curve impeller,
- adjustable pulley,
- class F electric motor, IP55,
- galvanised steel casing, can be dismantled as standard,
- motor access panel adjustable on site,
- proximity switch fitted in factory,
- built-in airflow adjustment device: ProtectONE® Adapt (patented system) optional,

11039501

ProtectONE® TA 225 1SP

Supplementary characteristics

- accessories:
 - square/circular adjustment plate for intake,
 - rain hood anti-bird visor on outlet,
 - rectangular and circular flexible sleeve,
 - rectangular/circular flexible adapter part on outlet,
 - anti-vibration mountings,
 - backdraft damper,
 - rain hood + grille,
 - outlet flange,
 - AXONE 1SP safety box, 1-speed progressive start,
 - AXONE 2SP safety box, 2-speed smoke exhaust and comfort + smoke exhaust.
- available options:
 - "All-in-One" solution: safety box + switch + pressure switch installed and wired in factory,
 - choice of motor access panel,
 - horizontal or vertical outlet,
 - thermal + acoustic insulation certified 12101-3 for installation in equipment rooms,
 - variable pulley,
 - ProtectONE® Adapt (patented): rapid airflow adjustment.

Accessories

Désignations	Variants
ProtectONE® T vertical outlet grille 225	11039621
Flexible connector - Ø 400	11096938
Pack of 4 anti-vibration mountings ProtectONE® T	11039347
RECT DIS SLV 225 PROTECTONE T	11039561
REC.CIR ADA INT D400 225 PROTE	11039571
RAIN HOOD GRILLE 225 PROTECTONE T	11039581
DISCHARGE FLANGE 225 PROTECT T	11039591
FLEXIBLE ADAPTER DISCHARGE 225 PROTECTONE T	11039601
NON-RETURN 225 PROTECTONE T	11039611

Options

PRESSD
base
1.5/2P
1V<13KW
1V<23KW
1V<9KW
2,2/2P;2.2/2P
BRIDE2
ISOLB
PPTATR
PVAR5
VOLET2

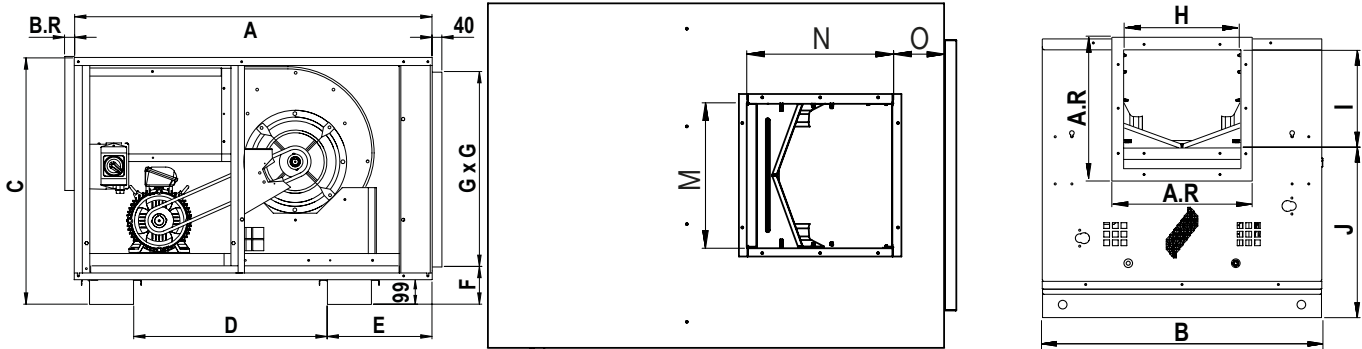
General data

Variants	Type of motor	Type of impeller
11039501	AC	Forward curve

11039501 ProtectONE® TA 225 1SP

Dimensional data

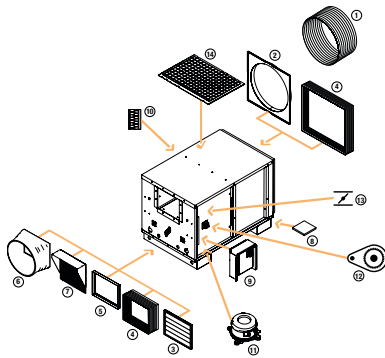
Variants	A (mm)	A.R (mm)	B (mm)	B.R (mm)	C (mm)	D (mm)	E (mm)	F (mm)	G (mm)	H (mm)
11039501	1047	350	712	43	757	619	214	153	550	290



Electrical datas

Variants	Id/In	Max. current (A)	Rated current (A)	Voltage (V)	Number of poles	Power (kW)	Caractéristiques électriques
11039501	6.5-7- 6.6(2P)/7(4P)	2,6- 3,5- 5,0(2P) ; 5,1(4P)	2,3- 3,2-4,6	400	2-2-2/4	1,1 - 1,5 - 2,2	<table><tr>

Installation



Accessoires ProtectONE T

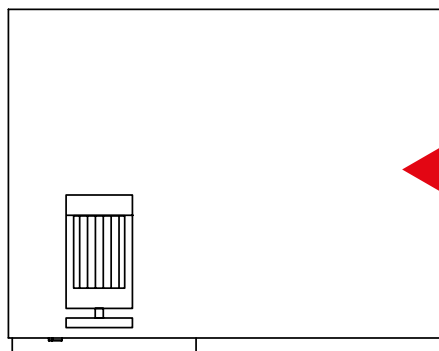


Schéma en vue de dessus, avec accès gauche

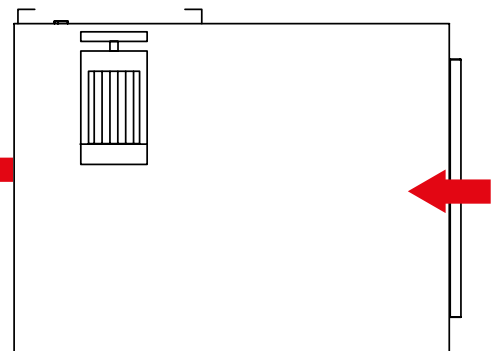
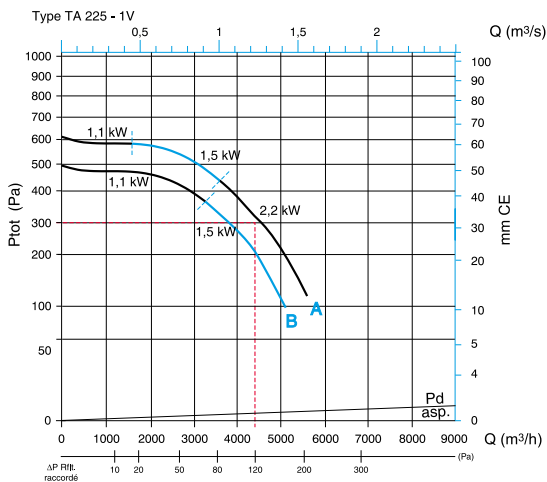


Schéma en vue de dessus, avec accès droit

Curve



> curves according to NF EN ISO 5801 - C-type installation:

- > ducted intake, non-ducted discharge.
- Ptot: Total pressure,
- Pd asp. : dynamic pressure in air intake duct,
- ΔP ducted discharge: pressure rise with ducted discharge instead of non-ducted discharge.

> Unit with ducted intake and non-ducted discharge:

- example where $Q = 4320 \text{ m}^3/\text{h}$ and dP network (upstream + downstream) = 300 Pa
- Ptot unit to select = 300 Pa.
- => ProtectONE® TA 225 A 2.2 kW

> Unit with ducted intake and discharge:

- Ptot unit = dP network (upstream + downstream)- ΔP ducted discharge
- example where $Q = 4320 \text{ m}^3/\text{h}$ and dP network (upstream + downstream) = 300 Pa
- ΔP ducted discharge = 120 Pa
- Ptot unit to select = 300 - 120 = 180 Pa