

11039532

ProtectONE® TR 250 1SP

ProtectONE® TR 1SP is an F400-120 1-speed smoke and heat exhaust box fan for commercial and industrial premises.



Smoke exhaust unit ProtectONE T

PRODUCT BENEFITS

- easily adjusted airflow with the exclusive ProtectONE® Adapt system,
- can be fully dismantled as standard (except for insulated model),
- thermal insulation for installation in equipment room,
- backward curve impeller: smaller variation in airflow even if pressure losses vary.

REGLEMENTATIONS AND COMPLIANCES

PV CE number : 1812-CPR-1548

Principles of operation

When commanded by the FACP, the safety box will activate ProtectONE® T in smoke exhaust mode to extract smoke. The box will then switch to “default” mode, then “standby”.

Product description

ProtectONE® TR 1SP is an F400-120 1-speed smoke and heat exhaust box fan for commercial and industrial premises. It features a belt-driven backward curve impeller. The ProtectONE® Adapt adjustment device can adjust the exhaust airflow easily at any time.

Fields of application

New, Refurbishment, Non-residential buildings

Installation

- indoors or outdoors,
- indoor installation: use thermal-acoustic insulation option (EN 12101-3),
- outdoor installation: use rain hood + bird screen,
- proximity switch supplied fitted and wired, with position contacts.

Main characteristics

- complies with CE marking 1812-CPR-1548,
- certified EFECTIS F400-120 as per EN12101-3,
- safety box compliant with NF standards (NF S61-937-1, NFS61937-9, NF 537),
- compliant with European eco-design regulation (no. 1253/2014),
- belt-driven exhaust box fan,
- 8 models for airflow from 1,000 to 35,000 m³/h,
- single-speed motor generating 1.1 kW to 22 kW,
- balanced backward curve impeller,
- adjustable pulley,
- class F electric motor IP55,
- galvanised steel casing, can be dismantled as standard,
- motor access panel adjustable on site,
- proximity switch fitted in factory,
- airflow adjustment device built into unit: ProtectONE® Adapt (patented system), exclusive to ALDES (option),
- ProtectONE® TR 1-speed can extract:
 - smoke and hot gases in case of fire in all non-residential buildings,
 - stale air in non-residential and industrial buildings,
 - pollutants in professional kitchens.

11039532 ProtectONE® TR 250 1SP

Supplementary characteristics

- accessories:
 - square/circular adjustment plate for intake,
 - rain hood anti-bird visor on outlet,
 - rectangular and circular flexible sleeve,
 - rectangular/circular flexible adapter part on outlet,
 - anti-vibration mountings,
 - backdraft damper,
 - rain hood + grille,
 - outlet flange,
 - AXONE 1SP safety box, 1-speed progressive start,
 - AXONE 2SP safety box, 2-speed smoke exhaust and comfort + smoke exhaust.
- available options:
 - "All-in-One" solution: safety box + switch + pressure switch installed and wired in factory,
 - choice of motor access panel,
 - horizontal or vertical outlet,
 - thermal + acoustic insulation certified 12101-3 for installation in equipment rooms,
 - variable pulley,
 - ProtectONE® Adapt (patented): rapid airflow adjustment.

Accessories

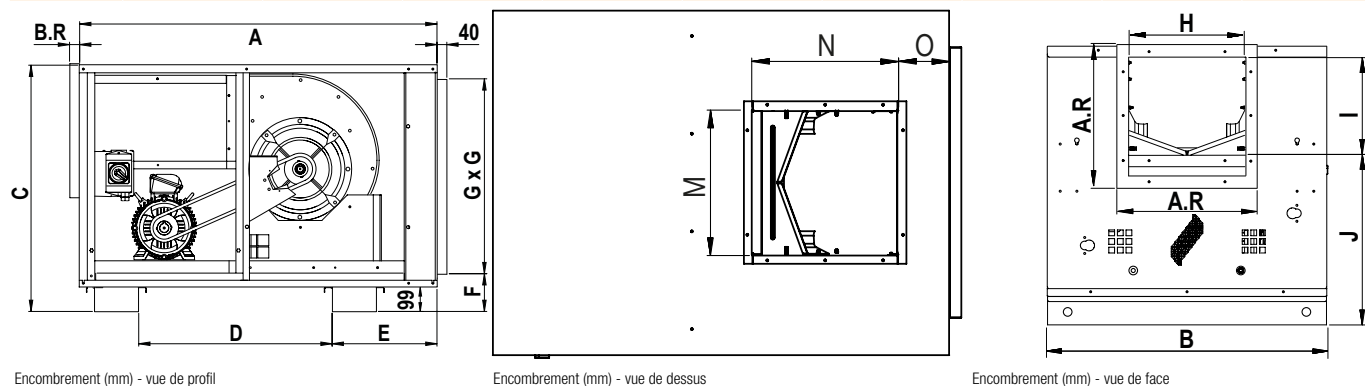
| Désignations | References |
|--|------------|
| ProtectONE® T vertical outlet grille 250 | 11039622 |
| Flexible connector - Ø 400 | 11096938 |
| Pack of 4 anti-vibration mountings ProtectONE® T | 11039347 |
| RECT DIS SLV 250 PROTECTONE T | 11039562 |
| REC.CIR ADA INT D400 250 PROTE | 11039572 |
| RAIN HOOD GRILLE 250 PROTECTONE T | 11039582 |
| DISCHARGE FLANGE 250 PROTECT T | 11039592 |
| FLEXIBLE ADAPTER DISCHARGE 250 PROTECTONE T | 11039602 |
| NON-RETURN 250 PROTECTONE T | 11039612 |

General data

| References | Type of motor | Type of impeller |
|------------|---------------|------------------|
| 11039532 | AC | Backward curve |

Dimensional data

| References | A (mm) | A.R (mm) | B (mm) | B.R (mm) | C (mm) | D (mm) | E (mm) | F (mm) | G (mm) | H (mm) |
|------------|--------|----------|--------|----------|--------|--------|--------|--------|--------|--------|
| 11039532 | 1152 | 400 | 792 | 43 | 791 | 619 | 319 | 145 | 600 | 324 |



Encombrement (mm) - vue de profil

Encombrement (mm) - vue de dessus

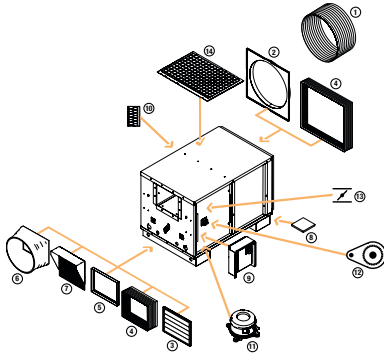
Encombrement (mm) - vue de face

11039532 ProtectONE® TR 250 1SP

Electrical datas

| References | Id/In | Max. current (A) | Rated current (A) | Voltage (V) | Number of poles | Power (kW) |
|------------|------------|------------------|-------------------|-------------|-----------------|---------------|
| 11039532 | 7/6.6- 7.5 | 3,5-5,0-6,5 | 3,2-4,6-5,9 | 400 | 2 | 1,5 - 2,2 - 3 |

Installation visual 1



Accessoires ProtectONE T

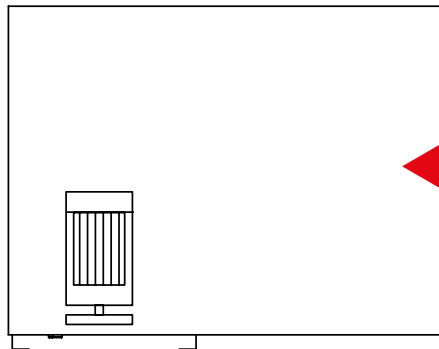


Schéma en vue de dessus, avec accès gauche

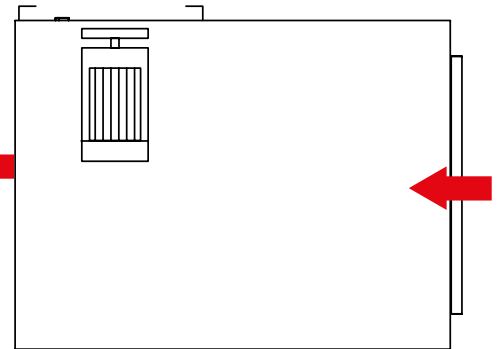
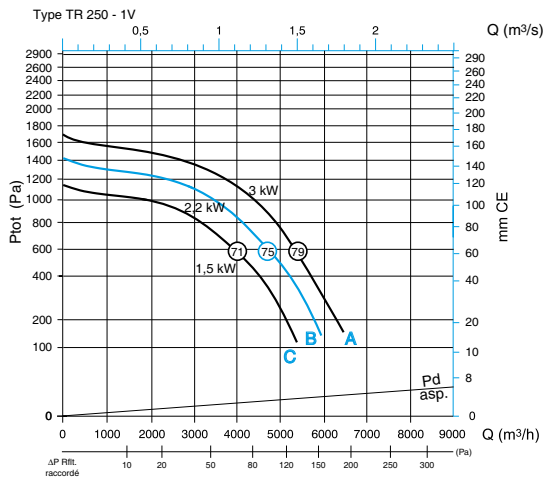


Schéma en vue de dessus, avec accès droit

Curve



> curves as per NF EN ISO 5801 :

- ducted intake, open outlet,
 - Ptot: Total pressure,
 - Pd intake. : dynamic pressure in duct on intake,
 - ΔP ducted outlet: higher pressure with ducted outlet rather than open outlet.
- > see ProtectONE TA 225 for explanations of curves.

| Aeratic properties ProtectONE® TR 250 - 1SP | | | | | |
|---|--------|--------|--------|--------|-------------|
| I (mm) | J (mm) | M (mm) | N (mm) | O (mm) | Weight (kg) |
| 269 | 481 | 322 | 322 | 160 | 128 |