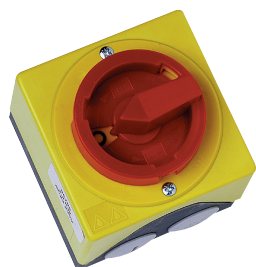


CMEV electrical accessory

11057607

Proximity switch 1-speed 3-Ph - 22.5 kW + contacts



Product description

This lockable proximity switch with On/Off function is for category AC 23 A use (high breaking capacity).

Fields of application

Multi-occupancy residential housing, New, Refurbishment, Non-residential buildings

Installation

- compatible with all single-phase and 3-phase fan units (depending on the max. power consumed),
- the 3-phase 1-Sp switch can be used to cut off the power supply to a single-phase 2-speed motor or 1-speed motor if output above 0.9 kW

Reference arguments

- Presented in IP64 box for surface-mounted installation.
- Category of use AC 23.
- Equipped with auxiliary position limit switches - NO and NC - for 3-phase models only.
- Connection instructions supplied.

Main characteristics

- IP64 box for surface-mounted installation,
- category of use AC 23 (high disconnect power),
- equipped with auxiliary position limit switches - NO and NC - for 3-phase models only,
- NF certified for use with our AXONE safety boxes.

Dimensional data

Variants	Height (mm)	Width (mm)	Depth (mm)
11057607	110	180	143