

## Fitting accessory

11091093

Quick Susp. cable 5 m 0-45 kg

**Product description**

Quick suspension cables are used to hang circular, oblong and rectangular ducting, small fans, convector fans. They can also be used to secure plenums and diffusers. The system comprises a flexible steel cable fitted with a loop at one end. The other end is unlooped and slides through the locking mechanism, which enables the suspended object to be supported during and after it is installed. The locking system is built-in.

**Fields of application**

Multi-occupancy residential housing, Individual residential housing, New, Refurbishment, Non-residential buildings

**Installation**

- first pass the cable around the structural frame then through the loop,
- insert the cable into a groove in the locking mechanism,
- pass the cable round the duct and back into the locking mechanism.

**Reference arguments**

Application:

- Suspension of circular, oblong, rectangular ducting
- Suspension of small fans, convection fans
- Suspension and attachment of plenums + diffusers

Description:

- Bag of 10 quick suspension systems 5 m to support up to 45 kg
- Flexible galvanised steel cable fitted with loop end and unattached at other to enable attachment of product
- Built-in unlocking system

**Main characteristics**

- all parts made of galvanised steel,
- HK hook:
  - attachment hook for solid concrete slab or aerated concrete, hollow bricks, etc.,
  - stainless steel hook inserted into M8 hole,
  - max. working load: 75 kg.
- cable 1:
  - thickness: 1 mm,
  - max. working load: 0-15 kg,
  - use: securing plenums, ducting  $\varnothing < 200$  mm.
- cable 2:
  - thickness: 2 mm,
  - max. working load: 10-45 kg,
  - use: all ducting systems.

Fitting accessory

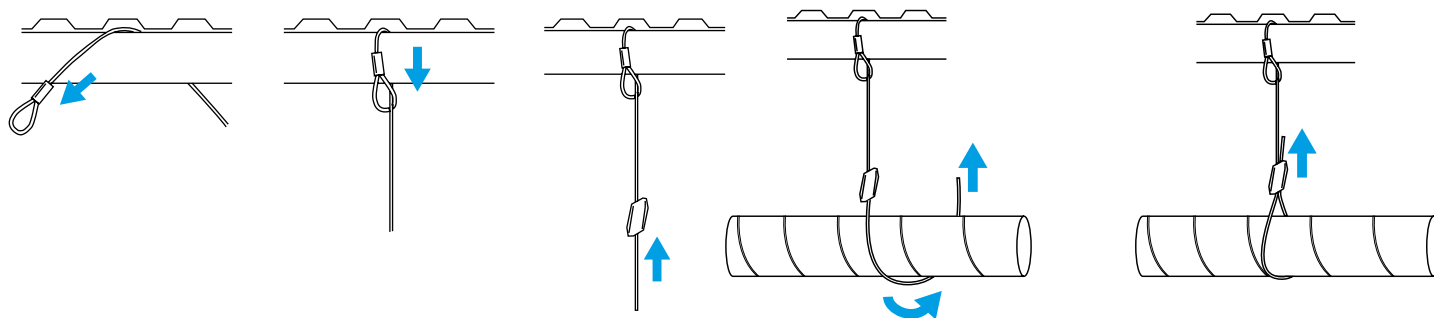
## 11091093

Quick Susp. cable 5 m 0-45 kg

### General data

Variants	Maximum load (kg)
11091093	45

### Installation



Installation diagram for quick suspension cables

Installation diagram for quick suspension cables