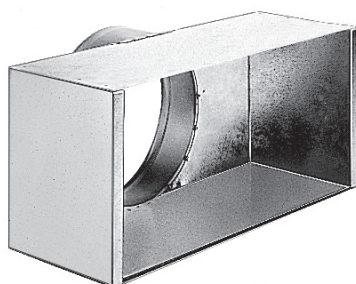


Collective static heat exchanger

11053615

RE plenum F0 300X300 D250



Product description

The RT plenum is used on air supply or extract via diffusers SF704, AN704 TP and AF704.

Fields of application

New, Refurbishment, Non-residential buildings

Installation

- concealed attachment to diffuser using side screws directly in the neck,
- assembly attached to concrete slab using tabs on plenum.

Reference arguments

- External frame and core made of assembled extruded aluminium profiles or formed steel plate.
- Spring system enabling removable core for access to interior.
- AF 704: anodised aluminium with natural satin finish or RAL 9010 white epoxy paint.
- SF 704: RAL 9010 white epoxy paint finish.
- Concealed attachment to plenum via screws in neck.
- Plenum fitted with brackets for attachment to concrete slab.

Main characteristics

- galvanised steel,
- connector on side.

Dimensional data

| Variants | H (mm) | L (mm) |
|----------|--------|--------|
| 11053615 | 301,5 | 330 |