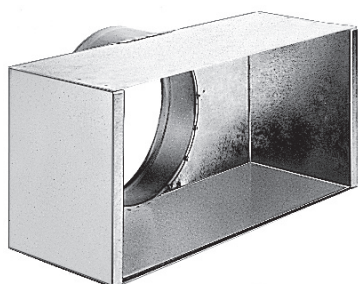


Pressed grille

11053360

RE123 plenum F0 AxB=600X600 D250 PC cfg



Product description

The RE plenum is used on air extraction via ceiling grilles SC 370, AO 123, AU 124 and AO 251.

Fields of application

New, Refurbishment, Non-residential buildings

Installation

- plenum and diffuser assembly attached to the concrete slab using the tabs on the plenum.

Main characteristics

- galvanised steel,
- connector on side.

Dimensional data

Variants	H (mm)	L (mm)	P (mm)
11053360	633,4	608,4	340

