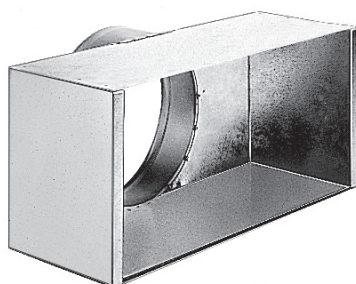


Transfer grille

11053577

RE637 plenum F0 D250 554X554

**Product description**

The RE plenum is used on air extraction via the AG 637 grille.

Fields of application

New, Refurbishment, Non-residential buildings

Installation

- grille attached using self-tapping screws,
- assembly attached to concrete slab using tabs on plenum.

Reference arguments

- Hinged door.
- Aluminium construction.
- RAL 9010 epoxy paint finish.
- Gravity attachment on suspended ceiling T-bar frame (F0) or by visible screws (F1 - specific for plasterboard ceilings).
- AG 637 WZ: Grille with fixed front fins, 45° incline, with filter.
- AC 174 WZ: 15 x 15 mm square mesh grille, 45° incline, with filter.

Main characteristics

- galvanised steel,
- connector on side.

Dimensional data

Variants	H (mm)	L (mm)
11053577	237	537