

Wipe

## 11093018

RPM Ø 125 - 12-24 V

The RPM will shut off a system branch as soon as it receives a command signal to do so.



### PRODUCT BENEFITS

- Motorised ducting isolation solution, very easy to install.

### Principles of operation

The RPM damper will use a thermal actuator to close its flap, to isolate the circuit. Caution, this damper must not be activated for more than 24 h continuously.

### Product description

The RPM is a motorised plastic damper. If triggered by a timer switch, a clock or a BMS signal, a thermal actuator will close the flap to isolate a system branch.

### Fields of application

Multi-occupancy residential housing, New, Refurbishment, Non-residential buildings

### Installation

- installed directly between two circular ducts,
- installation direction indicated on the RPM,
- the RPM must not be activated for more than 24 hours continuously,
- for connection with e.g. time delay switch ref. 11022008.

### Reference arguments

- M1 class plastic body.
- Flap operated by thermal piston.

### Main characteristics

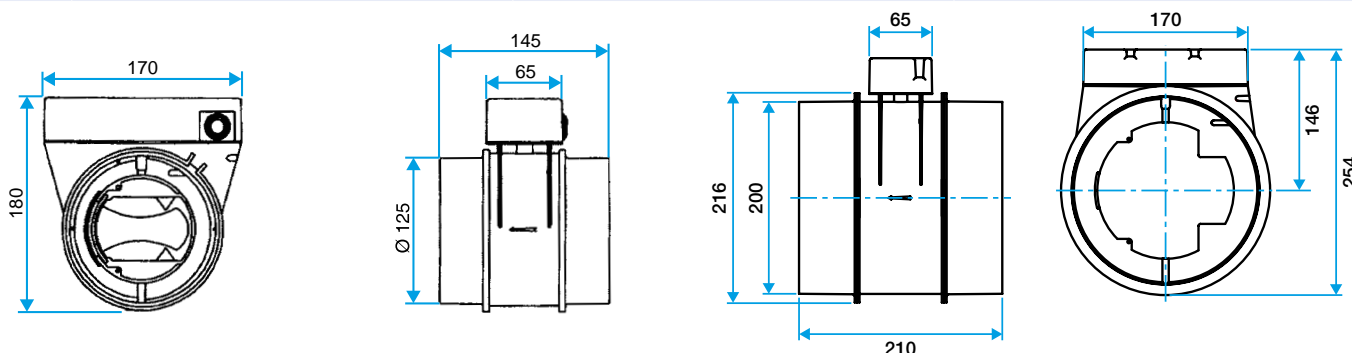
- Plastic body material, M1 fire certification,
- Operating pressure  $P < 200$  Pa.

### Accessories

Description	Variants
Timer switch 0-1 hr	11022008

### Dimensional data

Variants	L (mm)	Ø (mm)	Weight (kg)
11093018	145	125	0,628



Wipe

11093018

RPM Ø 125 - 12-24 V

## Airflow data

Variants	Pressure range (Pa)
11093018	< 200

## Electrical datas

Variants	Frequency (Hz)	Protection current (A)	Power consumption	Power supply	Voltage (V)
11093018	50/60	2	3	Single-phase	12/24

## Regulatory data

Variants	Fire protection rating
11093018	M1