

Wipe

11016062  
RPM Ø 200 12-24V

The RPM will shut off a system branch as soon as it receives a command signal to do to.



## PRODUCT BENEFITS

- Motorised ducting isolation solution, very easy to install.

## Principles of operation

The RPM damper will use a thermal actuator to close its flap, to isolate the circuit. Caution, this damper must not be activated for more than 24 h continuously.

## Product description

The RPM is a motorised plastic damper. If triggered by a timer switch, a clock or a BMS signal, a thermal actuator will close the flap to isolate a system branch.

## Fields of application

Multi-occupancy residential housing, New, Refurbishment, Non-residential buildings

## Installation

- installed directly between two circular ducts,
- installation direction indicated on the RPM,
- the RPM must not be activated for more than 24 hours continuously,
- for connection with e.g. time delay switch ref. 11022008.

## Reference arguments

- Plastic body, M1 fire rating.
- Flap operated by thermal piston.

## Main characteristics

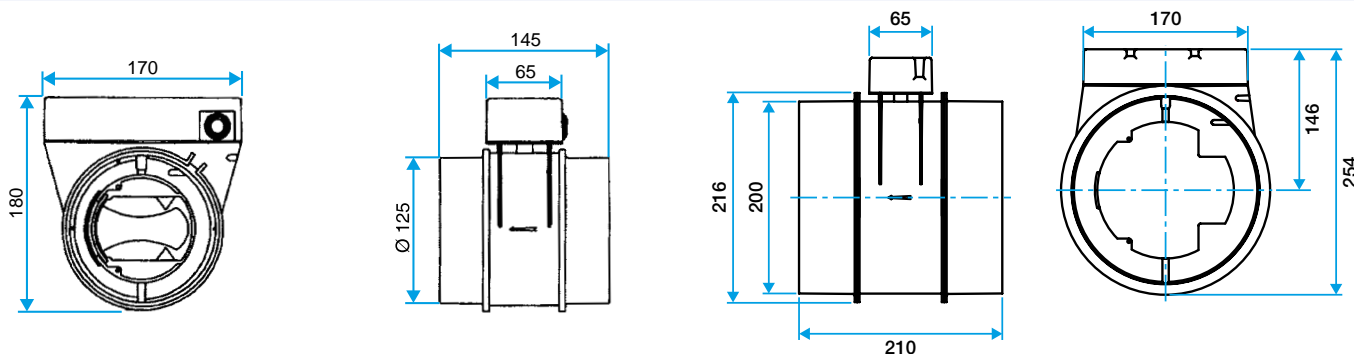
- Plastic body material, M1 fire certification,
- Operating pressure  $P < 200$  Pa.

## Accessories

Description	Variants
Timer switch 0-1 hr	11022008
RCC F/M D200/160	11041935

## Dimensional data

Variants	L (mm)	Ø (mm)	Weight (kg)
11016062	210	200	1,2



Wipe

11016062  
RPM Ø 200 12-24V

**Airflow data**

Variants	Pressure range (Pa)
11016062	< 200

**Electrical datas**

Variants	Frequency (Hz)	Protection current (A)	Power consumption	Power supply	Voltage (V)
11016062	50/60	2	3	Single-phase	12/24

**Regulatory data**

Variants	Fire protection rating
11016062	M1