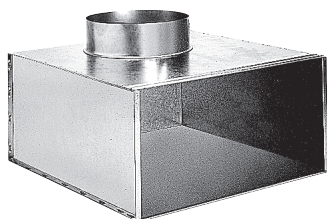


Collective static heat exchanger

11053580

RT plenum F0 150X150 D125



Product description

The RT plenum is used on air supply or extract via the AC 161 and AC 163 grilles or the square diffusers SF704, AN704 TP and AF704.

Fields of application

New, Refurbishment, Non-residential buildings

Installation

- RT 160 models: grille attached with self-tapping screw,
- RT F0 models: concealed attachment to diffuser using side screws directly in neck,
- assembly attached to concrete slab using tabs on plenum.

Reference arguments

- External frame and core made of assembled extruded aluminium profiles or formed steel plate.
- Spring system enabling removable core for access to interior.
- AF 704: anodised aluminium with natural satin finish or RAL 9010 white epoxy paint.
- SF 704: RAL 9010 white epoxy paint finish.
- Concealed attachment to plenum via screws in neck.
- Plenum fitted with brackets for attachment to concrete slab.

Main characteristics

- galvanised steel,
- rear connection.

Dimensional data

Variants	H (mm)	L (mm)
11053580	150	150

