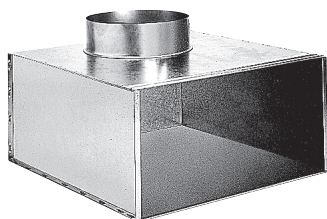


Collective static heat exchanger

11053588

RT plenum F0 375X375 D315



### Product description

The RT plenum is used on air supply or extract via the AC 161 and AC 163 grilles or the square diffusers SF704, AN704 TP and AF704.

### Fields of application

New, Refurbishment, Non-residential buildings

### Installation

- RT 160 models: grille attached with self-tapping screw,
- RT F0 models: concealed attachment to diffuser using side screws directly in neck,
- assembly attached to concrete slab using tabs on plenum.

### Reference arguments

- External frame and core made of assembled extruded aluminium profiles or formed steel plate.
- Spring system enabling removable core for access to interior.
- AF 704: anodised aluminium with natural satin finish or RAL 9010 white epoxy paint.
- SF 704: RAL 9010 white epoxy paint finish.
- Concealed attachment to plenum via screws in neck.
- Plenum fitted with brackets for attachment to concrete slab.

### Main characteristics

- galvanised steel,
- rear connection.

### Dimensional data

Variants	H (mm)	L (mm)
11053588	375	375

